

Anti-MYBPC3 Antibody
Rabbit polyclonal antibody to MYBPC3
Catalog # AP60822**Specification**

Anti-MYBPC3 Antibody - Product Information

Application	WB, IHC
Primary Accession	Q14896
Other Accession	O70468
Reactivity	Human, Mouse, Rat
Host	Rabbit
Clonality	Polyclonal
Calculated MW	140762

Anti-MYBPC3 Antibody - Additional Information**Gene ID** 4607**Other Names**

Myosin-binding protein C, cardiac-type; Cardiac MyBP-C; C-protein, cardiac muscle isoform

Target/Specificity

KLH-conjugated synthetic peptide encompassing a sequence within the center region of human MYBPC3. The exact sequence is proprietary.

Dilution

WB~~WB (1/500 - 1/2000), IH (1/50 - 1/200)

IHC~~1:100~500

Format

Liquid in 0.42% Potassium phosphate, 0.87% Sodium chloride, pH 7.3, 30% glycerol, and 0.09% (W/V) sodium azide.

Storage

Store at -20 °C. Stable for 12 months from date of receipt

Anti-MYBPC3 Antibody - Protein Information**Name** MYBPC3**Function**

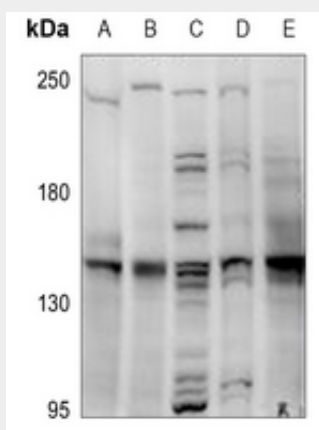
Thick filament-associated protein located in the crossbridge region of vertebrate striated muscle a bands. In vitro it binds MHC, F- actin and native thin filaments, and modifies the activity of actin-activated myosin ATPase. It may modulate muscle contraction or may play a more structural role.

Anti-MYBPC3 Antibody - Protocols

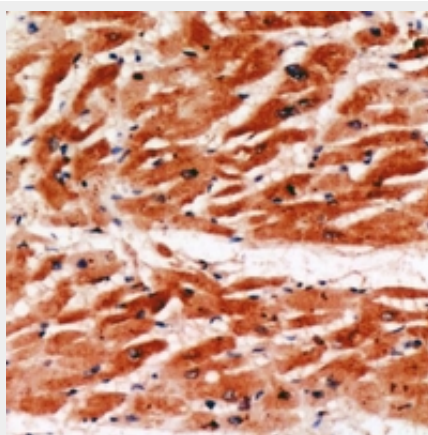
Provided below are standard protocols that you may find useful for product applications.

- [Western Blot](#)
- [Blocking Peptides](#)
- [Dot Blot](#)
- [Immunohistochemistry](#)
- [Immunofluorescence](#)
- [Immunoprecipitation](#)
- [Flow Cytometry](#)
- [Cell Culture](#)

Anti-MYBPC3 Antibody - Images



Western blot analysis of MYBPC3 expression in H9C2 (A), Raw264.7 (B), EC9706 (C), H1792 (D), K562 (E) whole cell lysates.



Immunohistochemical analysis of MYBPC3 staining in human heart formalin fixed paraffin embedded tissue section. The section was pre-treated using heat mediated antigen retrieval with sodium citrate buffer (pH 6.0). The section was then incubated with the antibody at room temperature and detected using an HRP conjugated compact polymer system. DAB was used as the chromogen. The section was then counterstained with haematoxylin and mounted with DPX.

Anti-MYBPC3 Antibody - Background

KLH-conjugated synthetic peptide encompassing a sequence within the center region of human MYBPC3. The exact sequence is proprietary.