

Anti-ZP2 Antibody
Rabbit polyclonal antibody to ZP2
Catalog # AP60826**Specification**

Anti-ZP2 Antibody - Product Information

Application	WB, IH
Primary Accession	Q05996
Other Accession	P20239
Reactivity	Human, Mouse, Rat
Host	Rabbit
Clonality	Polyclonal
Calculated MW	82357

Anti-ZP2 Antibody - Additional Information**Gene ID** 7783**Other Names**

ZPA; Zona pellucida sperm-binding protein 2; Zona pellucida glycoprotein 2; Zp-2; Zona pellucida protein A

Target/Specificity

Recognizes endogenous levels of ZP2 protein.

Dilution

WB~~WB (1/500 - 1/2000), IH (1/50 - 1/200)

IH~~WB (1/500 - 1/2000), IH (1/50 - 1/200)

Format

Liquid in 0.42% Potassium phosphate, 0.87% Sodium chloride, pH 7.3, 30% glycerol, and 0.09% (W/V) sodium azide.

Storage

Store at -20 °C. Stable for 12 months from date of receipt

Anti-ZP2 Antibody - Protein Information**Name** ZP2**Synonyms** ZPA**Function**

Component of the zona pellucida, an extracellular matrix surrounding oocytes which mediates sperm binding, induction of the acrosome reaction and prevents post-fertilization polyspermy (PubMed:29895852). The zona pellucida is composed of 3 to 4 glycoproteins, ZP1, ZP2, ZP3, and ZP4. ZP2 may act as a secondary sperm receptor (PubMed:<a href="http://www.uniprot.org/citations/29895852"

target="_blank">29895852).

Cellular Location

[Processed zona pellucida sperm-binding protein 2]: Zona pellucida

Tissue Location

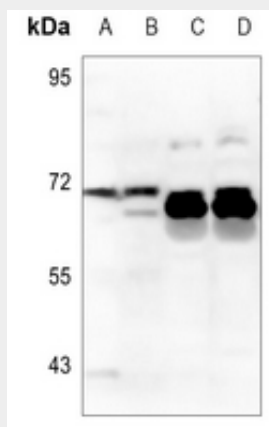
Expressed in oocytes(at protein level).

Anti-ZP2 Antibody - Protocols

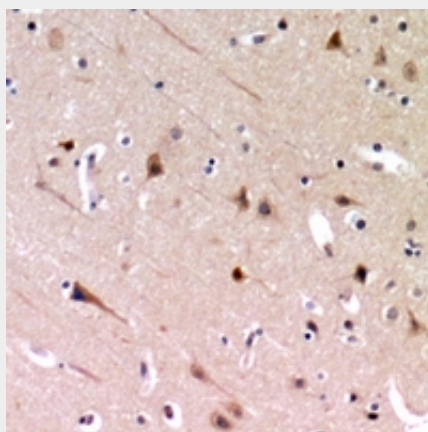
Provided below are standard protocols that you may find useful for product applications.

- [Western Blot](#)
- [Blocking Peptides](#)
- [Dot Blot](#)
- [Immunohistochemistry](#)
- [Immunofluorescence](#)
- [Immunoprecipitation](#)
- [Flow Cytometry](#)
- [Cell Culture](#)

Anti-ZP2 Antibody - Images



Western blot analysis of ZP2 expression in H1792 (A), A549 (B), mouse muscle (C), rat muscle (D) whole cell lysates.



Immunohistochemical analysis of ZP2 staining in human brain formalin fixed paraffin embedded tissue section. The section was pre-treated using heat mediated antigen retrieval with sodium citrate buffer (pH 6.0). The section was then incubated with the antibody at room temperature and detected using an HRP conjugated compact polymer system. DAB was used as the chromogen. The section was then counterstained with haematoxylin and mounted with DPX.

Anti-ZP2 Antibody - Background

KLH-conjugated synthetic peptide encompassing a sequence within the center region of human ZP2. The exact sequence is proprietary.