

Anti-HAPLN4 Antibody
Rabbit polyclonal antibody to HAPLN4
Catalog # AP60831**Specification**

Anti-HAPLN4 Antibody - Product Information

Application	WB
Primary Accession	Q86UW8
Other Accession	Q80WM4
Reactivity	Human, Mouse, Rat
Host	Rabbit
Clonality	Polyclonal
Calculated MW	42801

Anti-HAPLN4 Antibody - Additional Information**Gene ID** 404037**Other Names**

BRAL2; KIAA1926; Hyaluronan and proteoglycan link protein 4; Brain link protein 2

Target/Specificity

Recognizes endogenous levels of HAPLN4 protein.

Dilution

WB~~WB (1/500 - 1/2000)

Format

Liquid in 0.42% Potassium phosphate, 0.87% Sodium chloride, pH 7.3, 30% glycerol, and 0.09% (W/V) sodium azide.

Storage

Store at -20 °C. Stable for 12 months from date of receipt

Anti-HAPLN4 Antibody - Protein Information**Name** HAPLN4**Synonyms** BRAL2, KIAA1926**Function**

Essential for the proper localization of brevican (BCAN), mainly as a perineuronal nets (PNNs)-type deposition in the brainstem and cerebellum thereby playing a key role in the formation and structural organization of PNNs (By similarity). Contributes to the formation and transmission of inhibitory GABAergic synapses between Purkinje cells and deep cerebellar nuclei neurons (By similarity).

Cellular Location

Secreted, extracellular space, extracellular matrix {ECO:0000250|UniProtKB:Q9ESM3}

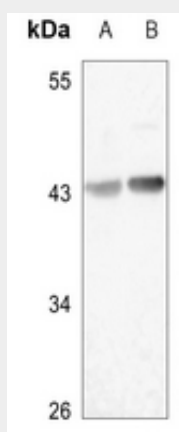
Tissue Location

Expressed predominantly in brain.

Anti-HAPLN4 Antibody - Protocols

Provided below are standard protocols that you may find useful for product applications.

- [Western Blot](#)
- [Blocking Peptides](#)
- [Dot Blot](#)
- [Immunohistochemistry](#)
- [Immunofluorescence](#)
- [Immunoprecipitation](#)
- [Flow Cytometry](#)
- [Cell Culture](#)

Anti-HAPLN4 Antibody - Images

Western blot analysis of HAPLN4 expression in mouse muscle (A), rat kidney (B) whole cell lysates.

Anti-HAPLN4 Antibody - Background

KLH-conjugated synthetic peptide encompassing a sequence within the center region of human HAPLN4. The exact sequence is proprietary.