

**Anti-MEF2A (AcK403) Antibody**  
**Rabbit polyclonal antibody to MEF2A (AcK403)**  
**Catalog # AP60833****Specification**

---

**Anti-MEF2A (AcK403) Antibody - Product Information**

Application	WB
Primary Accession	<a href="#">Q02078</a>
Other Accession	<a href="#">Q60929</a>
Reactivity	Human, Mouse, Rat
Host	Rabbit
Clonality	Polyclonal
Calculated MW	54811

**Anti-MEF2A (AcK403) Antibody - Additional Information****Gene ID** 4205**Other Names**

MEF2; Myocyte-specific enhancer factor 2A; Serum response factor-like protein 1

**Target/Specificity**

KLH-conjugated synthetic peptide encompassing a sequence within the center region of human MEF2A. The exact sequence is proprietary.

**Dilution**

WB~~WB (1/500 - 1/2000)

**Format**

Liquid in 0.42% Potassium phosphate, 0.87% Sodium chloride, pH 7.3, 30% glycerol, and 0.09% (W/V) sodium azide.

**Storage**

Store at -20 °C. Stable for 12 months from date of receipt

**Anti-MEF2A (AcK403) Antibody - Protein Information****Name** MEF2A**Synonyms** MEF2**Function**

Transcriptional activator which binds specifically to the MEF2 element, 5'-YTA[AT](4)TAR-3', found in numerous muscle-specific genes. Also involved in the activation of numerous growth factor- and stress-induced genes. Mediates cellular functions not only in skeletal and cardiac muscle development, but also in neuronal differentiation and survival. Plays diverse roles in the control of cell growth, survival and apoptosis via p38 MAPK signaling in muscle-specific and/or growth factor-related transcription. In cerebellar granule neurons, phosphorylated and sumoylated MEF2A

represses transcription of NUR77 promoting synaptic differentiation. Associates with chromatin to the ZNF16 promoter.

**Cellular Location**

Nucleus {ECO:0000255|PROSITE-ProRule:PRU00251, ECO:0000269|PubMed:12691662, ECO:0000269|PubMed:16563226}

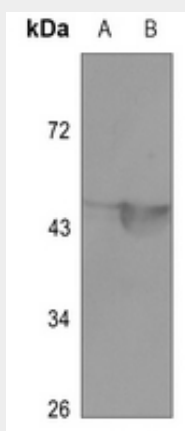
**Tissue Location**

Isoform MEF2 and isoform MEFA are expressed only in skeletal and cardiac muscle and in the brain. Isoform RSRFC4 and isoform RSRFC9 are expressed in all tissues examined

**Anti-MEF2A (AcK403) Antibody - Protocols**

Provided below are standard protocols that you may find useful for product applications.

- [Western Blot](#)
- [Blocking Peptides](#)
- [Dot Blot](#)
- [Immunohistochemistry](#)
- [Immunofluorescence](#)
- [Immunoprecipitation](#)
- [Flow Cytometry](#)
- [Cell Culture](#)

**Anti-MEF2A (AcK403) Antibody - Images**

Western blot analysis of MEF2A (AcK403) expression in mouse brain (A), mouse muscle (B) whole cell lysates.

**Anti-MEF2A (AcK403) Antibody - Background**

KLH-conjugated synthetic peptide encompassing a sequence within the center region of human MEF2A. The exact sequence is proprietary.