

Anti-Apolipoprotein A5 Antibody
Rabbit polyclonal antibody to Apolipoprotein A5
Catalog # AP60839**Specification**

Anti-Apolipoprotein A5 Antibody - Product Information

| | |
|-------------------|---------------------------|
| Application | WB |
| Primary Accession | Q6Q788 |
| Other Accession | Q8C7G5 |
| Reactivity | Human, Mouse, Rat, Monkey |
| Host | Rabbit |
| Clonality | Polyclonal |
| Calculated MW | 41213 |

Anti-Apolipoprotein A5 Antibody - Additional Information**Gene ID** 116519**Other Names**

RAP3; Apolipoprotein A-V; Apo-AV; ApoA-V; Apolipoprotein A5; Regeneration-associated protein 3

Target/Specificity

Recognizes endogenous levels of Apolipoprotein A5 protein.

Dilution

WB~~WB (1/500 - 1/2000)

Format

Liquid in 0.42% Potassium phosphate, 0.87% Sodium chloride, pH 7.3, 30% glycerol, and 0.09% (W/V) sodium azide.

Storage

Store at -20 °C.Stable for 12 months from date of receipt

Anti-Apolipoprotein A5 Antibody - Protein Information**Name** APOA5**Synonyms** RAP3**Function**

Minor apolipoprotein mainly associated with HDL and to a lesser extent with VLDL. May also be associated with chylomicrons. Important determinant of plasma triglyceride (TG) levels by both being a potent stimulator of apo-CII lipoprotein lipase (LPL) TG hydrolysis and an inhibitor of the hepatic VLDL-TG production rate (without affecting the VLDL-apoB production rate) (By similarity). Activates poorly lecithin:cholesterol acyltransferase (LCAT) and does not enhance efflux of cholesterol from macrophages. Binds heparin (PubMed:17326667).

Cellular Location

Secreted. Early endosome. Late endosome. Golgi apparatus, trans-Golgi network. Note=In the presence of SORL1, internalized to early endosomes, sorted in a retrograde fashion to late endosomes, from which a portion is sent to lysosomes and degradation, another portion is sorted to the trans-Golgi network

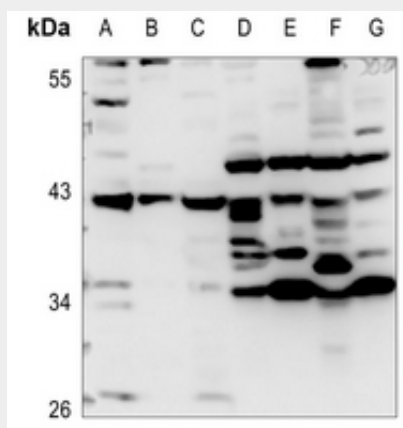
Tissue Location

Liver and plasma.

Anti-Apolipoprotein A5 Antibody - Protocols

Provided below are standard protocols that you may find useful for product applications.

- [Western Blot](#)
- [Blocking Peptides](#)
- [Dot Blot](#)
- [Immunohistochemistry](#)
- [Immunofluorescence](#)
- [Immunoprecipitation](#)
- [Flow Cytometry](#)
- [Cell Culture](#)

Anti-Apolipoprotein A5 Antibody - Images

Western blot analysis of Apolipoprotein A5 expression in HEK293T (A), H446 (B), Jurkat (C), mouse liver (D), mouse heart (E), rat liver (F), rat heart (G) whole cell lysates.

Anti-Apolipoprotein A5 Antibody - Background

KLH-conjugated synthetic peptide encompassing a sequence within the N-term region of human Apolipoprotein A5. The exact sequence is proprietary.