

Anti-CNOT7 Antibody
Rabbit polyclonal antibody to CNOT7
Catalog # AP60843**Specification**

Anti-CNOT7 Antibody - Product Information

Application	WB, IHC
Primary Accession	Q9UIV1
Other Accession	Q60809
Reactivity	Human, Mouse, Rat, Monkey, Chicken, Bovine
Host	Rabbit
Clonality	Polyclonal
Calculated MW	32745

Anti-CNOT7 Antibody - Additional Information**Gene ID** 29883**Other Names**

CAF1; CCR4-NOT transcription complex subunit 7; BTG1-binding factor 1; CCR4-associated factor 1; CAF-1; Caf1a

Target/Specificity

KLH-conjugated synthetic peptide encompassing a sequence within the N-term region of human CNOT7. The exact sequence is proprietary.

DilutionWB~~WB (1/500 - 1/2000), IH (1/50 - 1/200)
IHC~~1:100~500**Format**

Liquid in 0.42% Potassium phosphate, 0.87% Sodium chloride, pH 7.3, 30% glycerol, and 0.09% (W/V) sodium azide.

Storage

Store at -20 °C. Stable for 12 months from date of receipt

Anti-CNOT7 Antibody - Protein Information**Name** CNOT7**Synonyms** CAF1**Function**

Has 3'-5' poly(A) exoribonuclease activity for synthetic poly(A) RNA substrate (PubMed:19276069, PubMed:20634287, PubMed:20634287, PubMed:20634287)

href="http://www.uniprot.org/citations/31439799" target="_blank">31439799). Its function seems to be partially redundant with that of CNOT8 (PubMed:19605561). Catalytic component of the CCR4-NOT complex which is one of the major cellular mRNA deadenylases and is linked to various cellular processes including bulk mRNA degradation, miRNA-mediated repression, translational repression during translational initiation and general transcription regulation (PubMed:19276069, PubMed:20634287, PubMed:31439799). During miRNA-mediated repression the complex also seems to act as translational repressor during translational initiation (PubMed:20065043). Additional complex functions may be a consequence of its influence on mRNA expression (PubMed:19276069, PubMed:23236473). Associates with members of the BTG family such as TOB1 and BTG2 and is required for their anti-proliferative activity (PubMed:19276069, PubMed:23236473).

Cellular Location

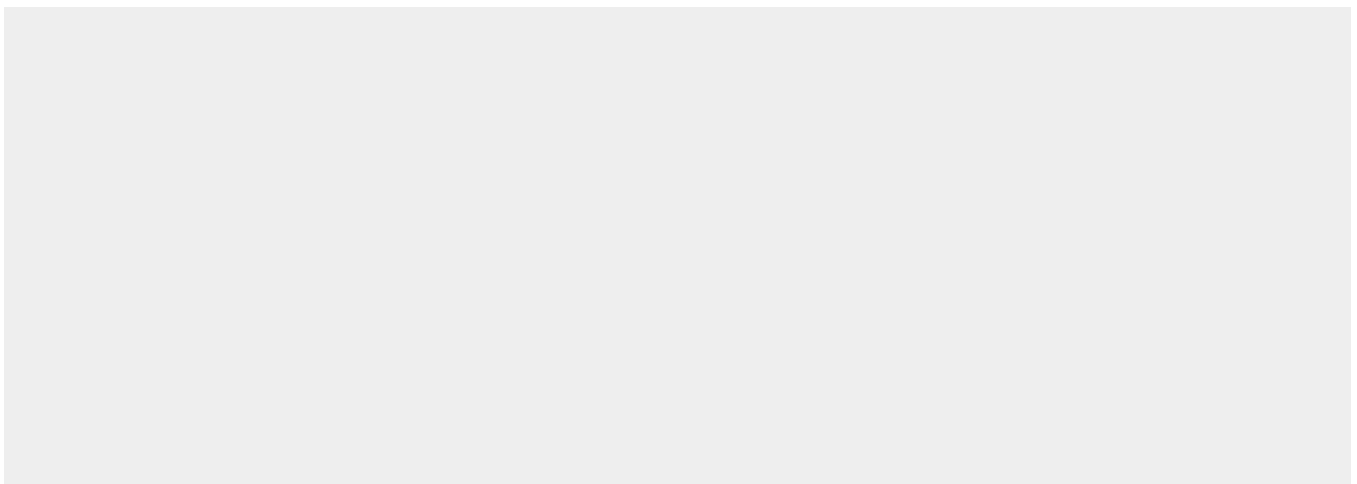
Nucleus. Cytoplasm, P-body {ECO:0000250|UniProtKB:Q60809}. Cytoplasm, Cytoplasmic ribonucleoprotein granule. Note=NANOS2 promotes its localization to P-body (By similarity). Recruited to cytoplasmic ribonucleoprotein membraneless compartments by CAPRIN1, promoting deadenylation of mRNAs (PubMed:31439799) {ECO:0000250|UniProtKB:Q60809, ECO:0000269|PubMed:31439799}

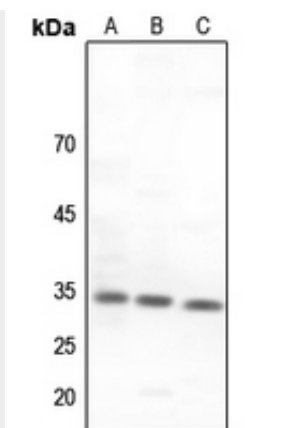
Anti-CNOT7 Antibody - Protocols

Provided below are standard protocols that you may find useful for product applications.

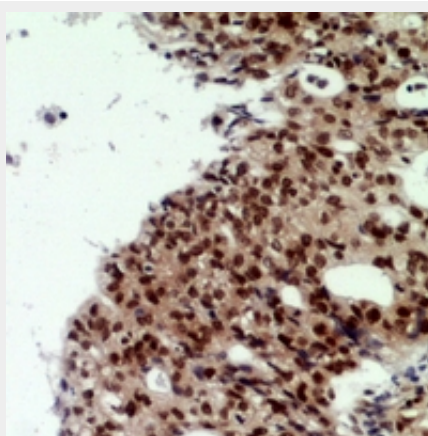
- [Western Blot](#)
- [Blocking Peptides](#)
- [Dot Blot](#)
- [Immunohistochemistry](#)
- [Immunofluorescence](#)
- [Immunoprecipitation](#)
- [Flow Cytometry](#)
- [Cell Culture](#)

Anti-CNOT7 Antibody - Images





Western blot analysis of CNOT7 expression in HEK293T (A), mouse brain (B), rat spleen (C) whole cell lysates.



Immunohistochemical analysis of CNOT7 staining in human ovarian cancer formalin fixed paraffin embedded tissue section. The section was pre-treated using heat mediated antigen retrieval with sodium citrate buffer (pH 6.0). The section was then incubated with the antibody at room temperature and detected using an HRP conjugated compact polymer system. DAB was used as the chromogen. The section was then counterstained with haematoxylin and mounted with DPX.

Anti-CNOT7 Antibody - Background

KLH-conjugated synthetic peptide encompassing a sequence within the N-term region of human CNOT7. The exact sequence is proprietary.