

Anti-EPS8L1 Antibody
Rabbit polyclonal antibody to EPS8L1
Catalog # AP60845**Specification**

Anti-EPS8L1 Antibody - Product Information

Application	WB, IF/IC, IHC
Primary Accession	Q8TE68
Other Accession	Q8R5F8
Reactivity	Human, Mouse, Rat
Host	Rabbit
Clonality	Polyclonal
Calculated MW	80251

Anti-EPS8L1 Antibody - Additional Information**Gene ID** 54869**Other Names**

DRC3; EPS8R1; Epidermal growth factor receptor kinase substrate 8-like protein 1; EPS8-like protein 1; Epidermal growth factor receptor pathway substrate 8-related protein 1; EPS8-related protein 1

Target/Specificity

Recognizes endogenous levels of EPS8L1 protein.

Dilution

WB~~WB (1/500 - 1/2000), IH (1/50 - 1/200), IF/IC (1/50 - 1/100)

IF/IC~~N/A

IHC~~1:100~500

Format

Liquid in 0.42% Potassium phosphate, 0.87% Sodium chloride, pH 7.3, 30% glycerol, and 0.09% (W/V) sodium azide.

Storage

Store at -20 °C. Stable for 12 months from date of receipt

Anti-EPS8L1 Antibody - Protein Information**Name** EPS8L1**Synonyms** DRC3, EPS8R1**Function**

Stimulates guanine exchange activity of SOS1. May play a role in membrane ruffling and remodeling of the actin cytoskeleton.

Cellular Location

Cytoplasm.

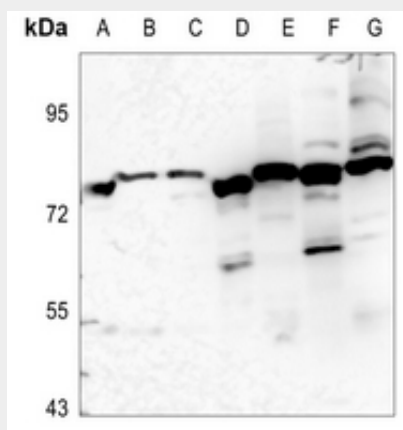
Tissue Location

Detected in placenta.

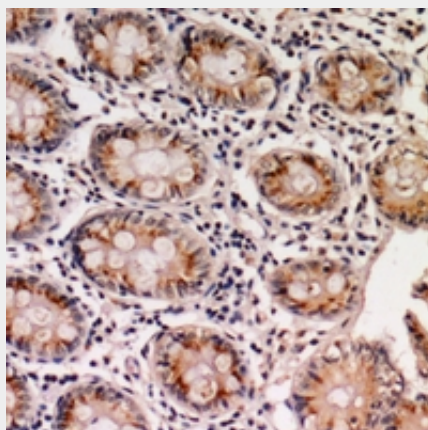
Anti-EPS8L1 Antibody - Protocols

Provided below are standard protocols that you may find useful for product applications.

- [Western Blot](#)
- [Blocking Peptides](#)
- [Dot Blot](#)
- [Immunohistochemistry](#)
- [Immunofluorescence](#)
- [Immunoprecipitation](#)
- [Flow Cytometry](#)
- [Cell Culture](#)

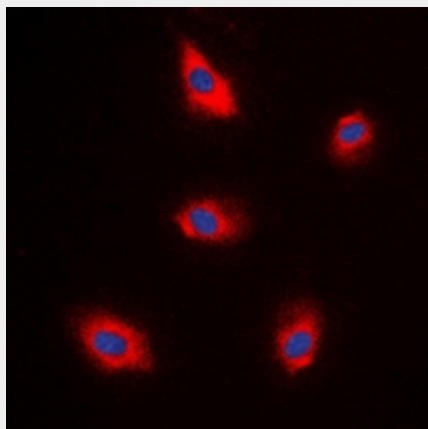
Anti-EPS8L1 Antibody - Images

Western blot analysis of EPS8L1 expression in HEK293T (A), H1688 (B), H446 (C), mouse kidney (D), mouse spleen (E), rat kidney (F), rat spleen (G) whole cell lysates.



Immunohistochemical analysis of EPS8L1 staining in human colon cancer formalin fixed paraffin embedded tissue section. The section was pre-treated using heat mediated antigen retrieval with

sodium citrate buffer (pH 6.0). The section was then incubated with the antibody at room temperature and detected using an HRP conjugated compact polymer system. DAB was used as the chromogen. The section was then counterstained with haematoxylin and mounted with DPX.



Immunofluorescent analysis of EPS8L1 staining in A549 cells. Formalin-fixed cells were permeabilized with 0.1% Triton X-100 in TBS for 5-10 minutes and blocked with 3% BSA-PBS for 30 minutes at room temperature. Cells were probed with the primary antibody in 3% BSA-PBS and incubated overnight at 4 °C in a humidified chamber. Cells were washed with PBST and incubated with a DyLight 594-conjugated secondary antibody (red) in PBS at room temperature in the dark. DAPI was used to stain the cell nuclei (blue).

Anti-EPS8L1 Antibody - Background

KLH-conjugated synthetic peptide encompassing a sequence within the center region of human EPS8L1. The exact sequence is proprietary.