

Anti-PDCD12 Antibody
Rabbit polyclonal antibody to PDCD12
Catalog # AP60849**Specification**

Anti-PDCD12 Antibody - Product Information

Application	WB, IF/IC, IHC
Primary Accession	O9NQS1
Reactivity	Human, Mouse, Rat, Monkey
Host	Rabbit
Clonality	Polyclonal
Calculated MW	38506

Anti-PDCD12 Antibody - Additional Information**Gene ID** 57099**Other Names**

Cell death regulator Aven

Target/Specificity

Recognizes endogenous levels of PDCD12 protein.

Dilution

WB~~WB (1/500 - 1/2000), IH (1/50 - 1/200), IF/IC (1/50 - 1/100)

IF/IC~~N/A

IHC~~1:100~500

Format

Liquid in 0.42% Potassium phosphate, 0.87% Sodium chloride, pH 7.3, 30% glycerol, and 0.09% (W/V) sodium azide.

Storage

Store at -20 °C.Stable for 12 months from date of receipt

Anti-PDCD12 Antibody - Protein Information**Name** AVEN**Function**

Protects against apoptosis mediated by Apaf-1.

Cellular Location

Endomembrane system; Peripheral membrane protein. Note=Associated with intracellular membranes

Tissue Location

Highly expressed in testis, ovary, thymus, prostate, spleen, small intestine, colon, heart, skeletal

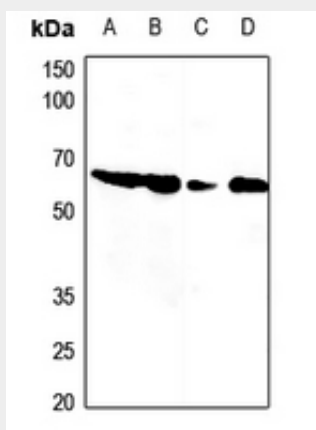
muscle, liver, kidney and pancreas

Anti-PDCD12 Antibody - Protocols

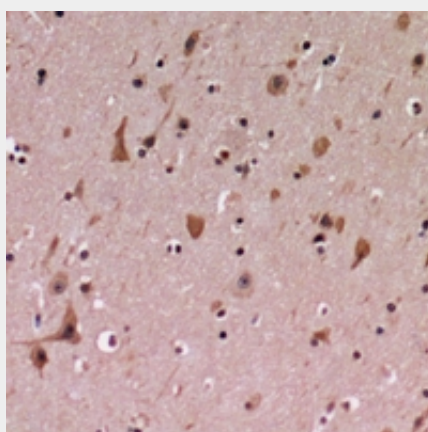
Provided below are standard protocols that you may find useful for product applications.

- [Western Blot](#)
- [Blocking Peptides](#)
- [Dot Blot](#)
- [Immunohistochemistry](#)
- [Immunofluorescence](#)
- [Immunoprecipitation](#)
- [Flow Cytometry](#)
- [Cell Culture](#)

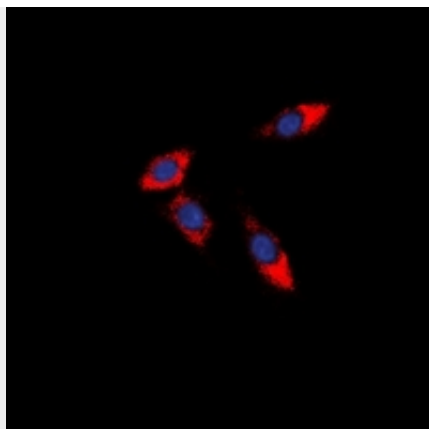
Anti-PDCD12 Antibody - Images



Western blot analysis of PDCD12 expression in HEK293T (A), Hela (B), mouse muscle (C), rat muscle (D) whole cell lysates.



Immunohistochemical analysis of PDCD12 staining in human brain formalin fixed paraffin embedded tissue section. The section was pre-treated using heat mediated antigen retrieval with sodium citrate buffer (pH 6.0). The section was then incubated with the antibody at room temperature and detected using an HRP conjugated compact polymer system. DAB was used as the chromogen. The section was then counterstained with haematoxylin and mounted with DPX.



Immunofluorescent analysis of PDCD12 staining in HeLa cells. Formalin-fixed cells were permeabilized with 0.1% Triton X-100 in TBS for 5-10 minutes and blocked with 3% BSA-PBS for 30 minutes at room temperature. Cells were probed with the primary antibody in 3% BSA-PBS and incubated overnight at 4 °C in a humidified chamber. Cells were washed with PBST and incubated with a DyLight 594-conjugated secondary antibody (red) in PBS at room temperature in the dark. DAPI was used to stain the cell nuclei (blue).

Anti-PDCD12 Antibody - Background

KLH-conjugated synthetic peptide encompassing a sequence within the C-term region of human PDCD12. The exact sequence is proprietary.