

**Anti-DCLK2 Antibody**  
**Rabbit polyclonal antibody to DCLK2**  
**Catalog # AP60851****Specification**

---

**Anti-DCLK2 Antibody - Product Information**

|                   |                        |
|-------------------|------------------------|
| Application       | WB, IF/IC              |
| Primary Accession | <a href="#">Q8N568</a> |
| Other Accession   | <a href="#">Q6PGN3</a> |
| Reactivity        | Human, Mouse, Rat      |
| Host              | Rabbit                 |
| Clonality         | Polyclonal             |
| Calculated MW     | 83606                  |

**Anti-DCLK2 Antibody - Additional Information****Gene ID** 166614**Other Names**

DCAMKL2; DCDC3B; DCK2; Serine/threonine-protein kinase DCLK2; CaMK-like CREB regulatory kinase 2; CL2; CLICK-II; CLICK2; Doublecortin domain-containing protein 3B; Doublecortin-like and CAM kinase-like 2; Doublecortin-like kinase 2

**Target/Specificity**

Recognizes endogenous levels of DCLK2 protein.

**Dilution**

WB~~WB (1/500 - 1/2000), IF/IC (1/50 - 1/100)  
IF/IC~~N/A

**Format**

Liquid in 0.42% Potassium phosphate, 0.87% Sodium chloride, pH 7.3, 30% glycerol, and 0.09% (W/V) sodium azide.

**Storage**

Store at -20 °C. Stable for 12 months from date of receipt

**Anti-DCLK2 Antibody - Protein Information****Name** DCLK2**Synonyms** DCAMKL2, DCDC3B, DCK2**Function**

Protein kinase with a significantly reduced C(a2+)/CAM affinity and dependence compared to other members of the CaMK family. May play a role in the down-regulation of CRE-dependent gene activation probably by phosphorylation of the CREB coactivator CRTC2/TORC2 and the resulting retention of TORC2 in the cytoplasm (By similarity).

**Cellular Location**

Cytoplasm, cytoskeleton. Note=Colocalizes with microtubules.

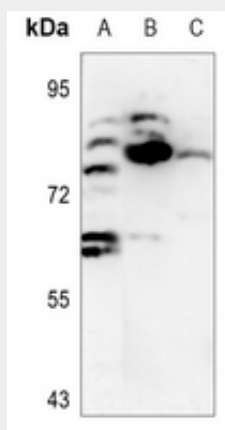
**Tissue Location**

Expressed in the brain, heart and eyes.

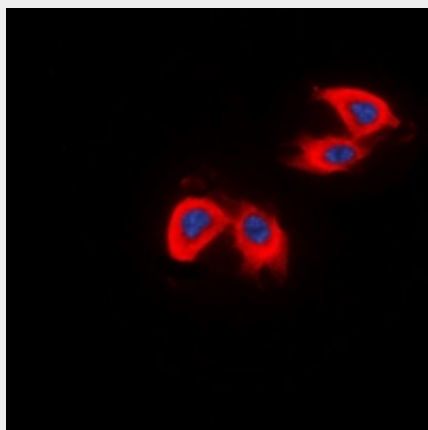
**Anti-DCLK2 Antibody - Protocols**

Provided below are standard protocols that you may find useful for product applications.

- [Western Blot](#)
- [Blocking Peptides](#)
- [Dot Blot](#)
- [Immunohistochemistry](#)
- [Immunofluorescence](#)
- [Immunoprecipitation](#)
- [Flow Cytometry](#)
- [Cell Culture](#)

**Anti-DCLK2 Antibody - Images**

Western blot analysis of DCLK2 expression in H1792 (A), mouse testis (B), mouse heart (C) whole cell lysates.



Immunofluorescent analysis of DCLK2 staining in HepG2 cells. Formalin-fixed cells were permeabilized with 0.1% Triton X-100 in TBS for 5-10 minutes and blocked with 3% BSA-PBS for

30 minutes at room temperature. Cells were probed with the primary antibody in 3% BSA-PBS and incubated overnight at 4 °C in a humidified chamber. Cells were washed with PBST and incubated with a DyLight 594-conjugated secondary antibody (red) in PBS at room temperature in the dark. DAPI was used to stain the cell nuclei (blue).

**Anti-DCLK2 Antibody - Background**

KLH-conjugated synthetic peptide encompassing a sequence within the N-term region of human DCLK2. The exact sequence is proprietary.