

**Anti-Latexin Antibody**  
**Rabbit polyclonal antibody to Latexin**  
**Catalog # AP60855****Specification**

---

**Anti-Latexin Antibody - Product Information**

Application	WB, IHC
Primary Accession	<a href="#">Q9BS40</a>
Other Accession	<a href="#">P70202</a>
Reactivity	Human, Mouse, Rat
Host	Rabbit
Clonality	Polyclonal
Calculated MW	25750

**Anti-Latexin Antibody - Additional Information****Gene ID** 56925**Other Names**

Latexin; Endogenous carboxypeptidase inhibitor; ECI; Protein MUM; Tissue carboxypeptidase inhibitor; TCI

**Target/Specificity**

KLH-conjugated synthetic peptide encompassing a sequence within the center region of human Latexin. The exact sequence is proprietary.

**Dilution**

WB~~WB (1/500 - 1/2000), IH (1/50 - 1/200)

IHC~~1:100~500

**Format**

Liquid in 0.42% Potassium phosphate, 0.87% Sodium chloride, pH 7.3, 30% glycerol, and 0.09% (W/V) sodium azide.

**Storage**

Store at -20 °C.Stable for 12 months from date of receipt

**Anti-Latexin Antibody - Protein Information****Name** LXN**Function**

Hardly reversible, non-competitive, and potent inhibitor of CPA1, CPA2 and CPA4. May play a role in inflammation.

**Cellular Location**

Cytoplasm.

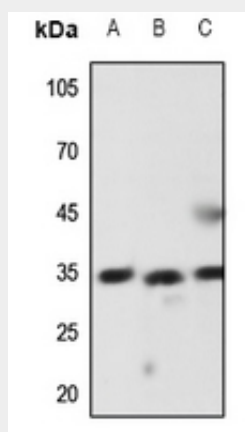
**Tissue Location**

Highly expressed in heart, prostate, ovary, kidney, pancreas, and colon, moderate or low in other tissues including brain

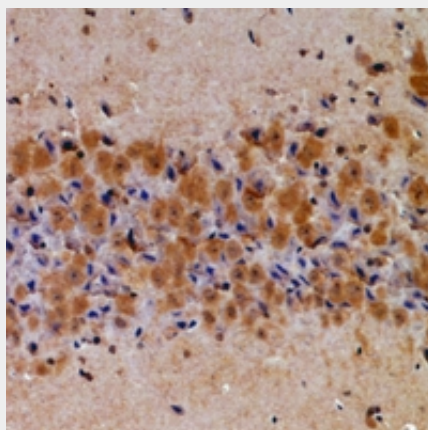
**Anti-Latexin Antibody - Protocols**

Provided below are standard protocols that you may find useful for product applications.

- [Western Blot](#)
- [Blocking Peptides](#)
- [Dot Blot](#)
- [Immunohistochemistry](#)
- [Immunofluorescence](#)
- [Immunoprecipitation](#)
- [Flow Cytometry](#)
- [Cell Culture](#)

**Anti-Latexin Antibody - Images**

Western blot analysis of Latexin expression in Hela (A), mouse liver (B), rat lung (C) whole cell lysates.



Immunohistochemical analysis of Latexin staining in rat brain formalin fixed paraffin embedded tissue section. The section was pre-treated using heat mediated antigen retrieval with sodium citrate buffer (pH 6.0). The section was then incubated with the antibody at room temperature and detected using an HRP conjugated compact polymer system. DAB was used as the

chromogen. The section was then counterstained with haematoxylin and mounted with DPX.

#### **Anti-Latexin Antibody - Background**

KLH-conjugated synthetic peptide encompassing a sequence within the center region of human Latexin. The exact sequence is proprietary.