

Anti-NOX1 Antibody
Rabbit polyclonal antibody to NOX1
Catalog # AP60859**Specification**

Anti-NOX1 Antibody - Product Information

Application	WB, IHC
Primary Accession	O9Y5S8
Other Accession	O8CIZ9
Reactivity	Human, Mouse
Host	Rabbit
Clonality	Polyclonal
Calculated MW	64871

Anti-NOX1 Antibody - Additional Information**Gene ID** 27035**Other Names**

MOX1; NOH1; NADPH oxidase 1; NOX-1; Mitogenic oxidase 1; MOX-1; NADH/NADPH mitogenic oxidase subunit P65-MOX; NOH-1

Target/Specificity

Recognizes endogenous levels of NOX1 protein.

DilutionWB~~WB (1/500 - 1/2000), IH (1/50 - 1/200)
IHC~~1:100~500**Format**

Liquid in 0.42% Potassium phosphate, 0.87% Sodium chloride, pH 7.3, 30% glycerol, and 0.09% (W/V) sodium azide.

Storage

Store at -20 °C. Stable for 12 months from date of receipt

Anti-NOX1 Antibody - Protein Information**Name** NOX1 ([HGNC:7889](#))**Synonyms** MOX1, NOH1**Function**

NADPH oxidase that catalyzes the generation of superoxide from molecular oxygen utilizing NADPH as an electron donor.

Cellular Location

Cell projection, invadopodium membrane; Multi-pass membrane protein. Cell membrane;

Multi-pass membrane protein

Tissue Location

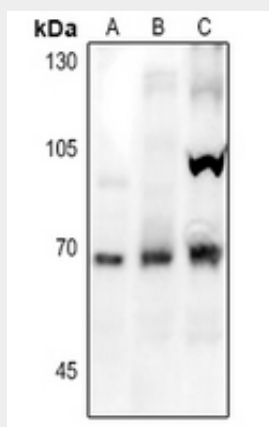
[Isoform NOH-1L]: Detected in colon, uterus, prostate, and colon carcinoma, but not in peripheral blood leukocytes

Anti-NOX1 Antibody - Protocols

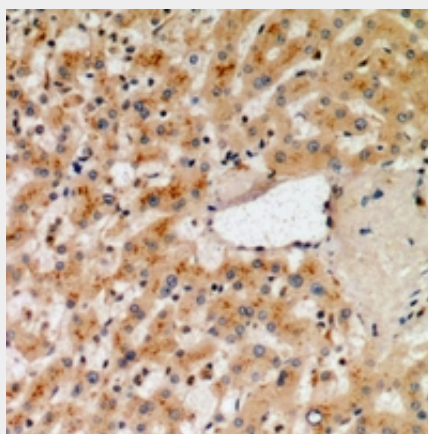
Provided below are standard protocols that you may find useful for product applications.

- [Western Blot](#)
- [Blocking Peptides](#)
- [Dot Blot](#)
- [Immunohistochemistry](#)
- [Immunofluorescence](#)
- [Immunoprecipitation](#)
- [Flow Cytometry](#)
- [Cell Culture](#)

Anti-NOX1 Antibody - Images



Western blot analysis of NOX1 expression in CT26 (A), A2780 (B), MCF7 (C) whole cell lysates.



Immunohistochemical analysis of NOX1 staining in human liver formalin fixed paraffin embedded tissue section. The section was pre-treated using heat mediated antigen retrieval with sodium citrate buffer (pH 6.0). The section was then incubated with the antibody at room temperature

and detected using an HRP conjugated compact polymer system. DAB was used as the chromogen. The section was then counterstained with haematoxylin and mounted with DPX.

Anti-NOX1 Antibody - Background

KLH-conjugated synthetic peptide encompassing a sequence within the center region of human NOX1. The exact sequence is proprietary.