

Anti-GDI2 Antibody
Rabbit polyclonal antibody to GDI2
Catalog # AP60863**Specification**

Anti-GDI2 Antibody - Product Information

Application	WB, IHC
Primary Accession	P50395
Other Accession	Q61598
Reactivity	Human, Mouse, Rat, Pig, Bovine, Dog
Host	Rabbit
Clonality	Polyclonal
Calculated MW	50663

Anti-GDI2 Antibody - Additional Information**Gene ID** 2665**Other Names**

RABGDIB; Rab GDP dissociation inhibitor beta; Rab GDI beta; Guanosine diphosphate dissociation inhibitor 2; GDI-2

Target/Specificity

Recognizes endogenous levels of GDI2 protein.

Dilution

WB~~WB (1/500 - 1/2000), IH (1/50 - 1/200)

IHC~~1:100~500

Format

Liquid in 0.42% Potassium phosphate, 0.87% Sodium chloride, pH 7.3, 30% glycerol, and 0.09% (W/V) sodium azide.

Storage

Store at -20 °C.Stable for 12 months from date of receipt

Anti-GDI2 Antibody - Protein Information**Name** GDI2**Synonyms** RABGDIB**Function**

GDP-dissociation inhibitor preventing the GDP to GTP exchange of most Rab proteins. By keeping these small GTPases in their inactive GDP-bound form regulates intracellular membrane trafficking (PubMed:25860027). Negatively regulates protein transport to the cilium and ciliogenesis through the inhibition of RAB8A (PubMed:<a href="http://www.uniprot.org/citations/25860027"

target="_blank">25860027).

Cellular Location

Cytoplasm. Membrane; Peripheral membrane protein. Golgi apparatus, trans-Golgi network

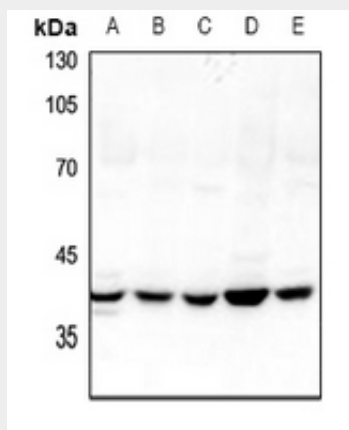
Tissue Location

Ubiquitous..

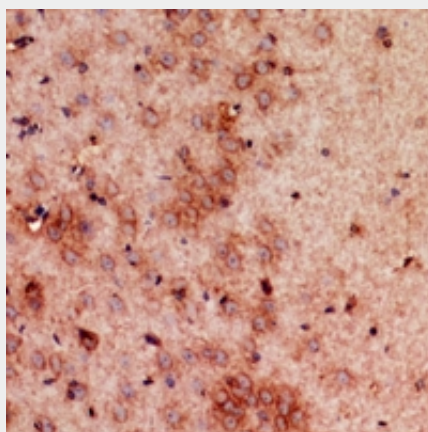
Anti-GDI2 Antibody - Protocols

Provided below are standard protocols that you may find useful for product applications.

- [Western Blot](#)
- [Blocking Peptides](#)
- [Dot Blot](#)
- [Immunohistochemistry](#)
- [Immunofluorescence](#)
- [Immunoprecipitation](#)
- [Flow Cytometry](#)
- [Cell Culture](#)

Anti-GDI2 Antibody - Images

Western blot analysis of GDI2 expression in A549 (A), Hela (B), LOVO (C), BV2 (D), PC12 (E) whole cell lysates.



Immunohistochemical analysis of GDI2 staining in mouse brain formalin fixed paraffin embedded tissue section. The section was pre-treated using heat mediated antigen retrieval with sodium citrate buffer (pH 6.0). The section was then incubated with the antibody at room temperature and detected using an HRP conjugated compact polymer system. DAB was used as the chromogen. The section was then counterstained with haematoxylin and mounted with DPX.

Anti-GDI2 Antibody - Background

KLH-conjugated synthetic peptide encompassing a sequence within the C-term region of human GDI2. The exact sequence is proprietary.