

**Anti-IDH3 alpha Antibody**  
**Rabbit polyclonal antibody to IDH3 alpha**  
**Catalog # AP60864****Specification**

---

**Anti-IDH3 alpha Antibody - Product Information**

Application	WB, IHC
Primary Accession	<a href="#">P50213</a>
Other Accession	<a href="#">Q9D6R2</a>
Reactivity	Human, Mouse, Rat, Monkey, Bovine
Host	Rabbit
Clonality	Polyclonal
Calculated MW	39592

**Anti-IDH3 alpha Antibody - Additional Information****Gene ID** 3419**Other Names**

Isocitrate dehydrogenase [NAD] subunit alpha mitochondrial; Isocitric dehydrogenase subunit alpha; NAD(+)-specific ICDH subunit alpha

**Target/Specificity**

KLH-conjugated synthetic peptide encompassing a sequence within the center region of human IDH3 alpha. The exact sequence is proprietary.

**Dilution**

WB~~WB (1/500 - 1/2000), IH (1/50 - 1/200)  
IHC~~1:100~500

**Format**

Liquid in 0.42% Potassium phosphate, 0.87% Sodium chloride, pH 7.3, 30% glycerol, and 0.09% (W/V) sodium azide.

**Storage**

Store at -20 °C. Stable for 12 months from date of receipt

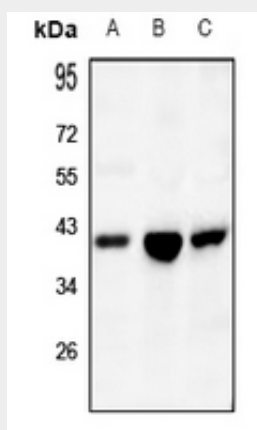
**Anti-IDH3 alpha Antibody - Protein Information****Name** IDH3A ([HGNC:5384](#))**Function**

Catalytic subunit of the enzyme which catalyzes the decarboxylation of isocitrate (ICT) into alpha-ketoglutarate. The heterodimer composed of the alpha (IDH3A) and beta (IDH3B) subunits and the heterodimer composed of the alpha (IDH3A) and gamma (IDH3G) subunits, have considerable basal activity but the full activity of the heterotetramer (containing two subunits of IDH3A, one of IDH3B and one of IDH3G) requires the assembly and cooperative function of both heterodimers.

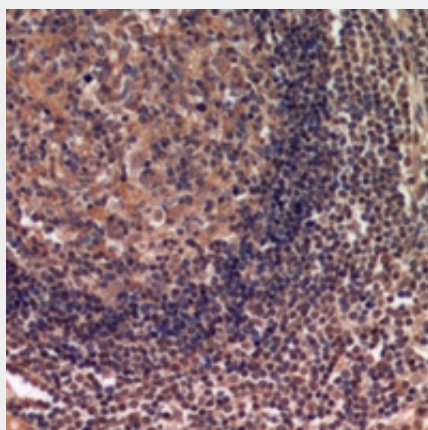
**Cellular Location**  
Mitochondrion.**Anti-IDH3 alpha Antibody - Protocols**

Provided below are standard protocols that you may find useful for product applications.

- [Western Blot](#)
- [Blocking Peptides](#)
- [Dot Blot](#)
- [Immunohistochemistry](#)
- [Immunofluorescence](#)
- [Immunoprecipitation](#)
- [Flow Cytometry](#)
- [Cell Culture](#)

**Anti-IDH3 alpha Antibody - Images**

Western blot analysis of IDH3 alpha expression in SGC7901 (A), PC12 (B), CT26 (C) whole cell lysates.



Immunohistochemical analysis of IDH3 alpha staining in human lymph gland formalin fixed paraffin embedded tissue section. The section was pre-treated using heat mediated antigen retrieval with sodium citrate buffer (pH 6.0). The section was then incubated with the antibody at room temperature and detected using an HRP conjugated compact polymer system. DAB was used as the chromogen. The section was then counterstained with haematoxylin and mounted

with DPX.

### **Anti-IDH3 alpha Antibody - Background**

KLH-conjugated synthetic peptide encompassing a sequence within the center region of human IDH3 alpha. The exact sequence is proprietary.