

**Anti-ORC3 Antibody**  
**Rabbit polyclonal antibody to ORC3**  
**Catalog # AP60866****Specification**

---

**Anti-ORC3 Antibody - Product Information**

Application	WB
Primary Accession	<a href="#">O9UBD5</a>
Other Accession	<a href="#">O9JK30</a>
Reactivity	Human, Mouse, Rat
Host	Rabbit
Clonality	Polyclonal
Calculated MW	82254

**Anti-ORC3 Antibody - Additional Information****Gene ID** 23595**Other Names**

LATHEO; ORC3L; Origin recognition complex subunit 3; Origin recognition complex subunit Latheo

**Target/Specificity**

KLH-conjugated synthetic peptide encompassing a sequence within the center region of human ORC3. The exact sequence is proprietary.

**Dilution**

WB~~WB (1/500 - 1/1000)

**Format**

Liquid in 0.42% Potassium phosphate, 0.87% Sodium chloride, pH 7.3, 30% glycerol, and 0.09% (W/V) sodium azide.

**Storage**

Store at -20 °C. Stable for 12 months from date of receipt

**Anti-ORC3 Antibody - Protein Information****Name** ORC3**Synonyms** LATHEO, ORC3L**Function**

Component of the origin recognition complex (ORC) that binds origins of replication. DNA-binding is ATP-dependent. The specific DNA sequences that define origins of replication have not been identified yet. ORC is required to assemble the pre-replication complex necessary to initiate DNA replication. Binds histone H3 and H4 trimethylation marks H3K9me3, H3K27me3 and H4K20me3.

**Cellular Location**

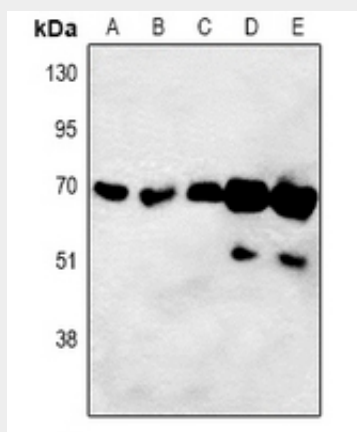
Nucleus. Chromosome

### Anti-ORC3 Antibody - Protocols

Provided below are standard protocols that you may find useful for product applications.

- [Western Blot](#)
- [Blocking Peptides](#)
- [Dot Blot](#)
- [Immunohistochemistry](#)
- [Immunofluorescence](#)
- [Immunoprecipitation](#)
- [Flow Cytometry](#)
- [Cell Culture](#)

### Anti-ORC3 Antibody - Images



Western blot analysis of ORC3 expression in HEK293T (A), HeLa (B), A549 (C), H9C2 (D), Raw264.7 (E) whole cell lysates.

### Anti-ORC3 Antibody - Background

KLH-conjugated synthetic peptide encompassing a sequence within the center region of human ORC3. The exact sequence is proprietary.