

Anti-ITPKA Antibody
Rabbit polyclonal antibody to ITPKA
Catalog # AP60870**Specification**

Anti-ITPKA Antibody - Product Information

Application	WB, IF
Primary Accession	P23677
Other Accession	Q8R071
Reactivity	Human, Mouse, Rat, Pig, Bovine, Drosophila
Host	Rabbit
Clonality	Polyclonal
Calculated MW	51009

Anti-ITPKA Antibody - Additional Information**Gene ID** 3706**Other Names**

Inositol-trisphosphate 3-kinase A; Inositol 145-trisphosphate 3-kinase A; IP3 3-kinase A; IP3K A; InsP 3-kinase A

Target/Specificity

Recognizes endogenous levels of ITPKA protein.

Dilution

WB~~WB (1/500 - 1/1000), IF/IC (1/100 - 1/500)

IF~~WB (1/500 - 1/1000), IF/IC (1/100 - 1/500)

Format

Liquid in 0.42% Potassium phosphate, 0.87% Sodium chloride, pH 7.3, 30% glycerol, and 0.09% (W/V) sodium azide.

Storage

Store at -20 °C. Stable for 12 months from date of receipt

Anti-ITPKA Antibody - Protein Information**Name** ITPKA ([HGNC:6178](#))**Function**

Catalyzes the phosphorylation of 1D-myo-inositol 1,4,5- trisphosphate (InsP3) into 1D-myo-inositol 1,3,4,5-tetrakisphosphate and participates to the regulation of calcium homeostasis.

Cellular Location

Cytoplasm, cytoskeleton

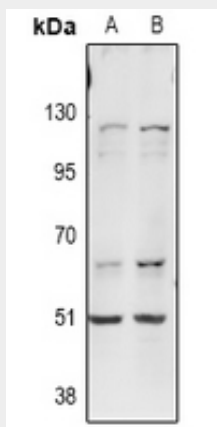
Tissue Location

Expressed in brain..

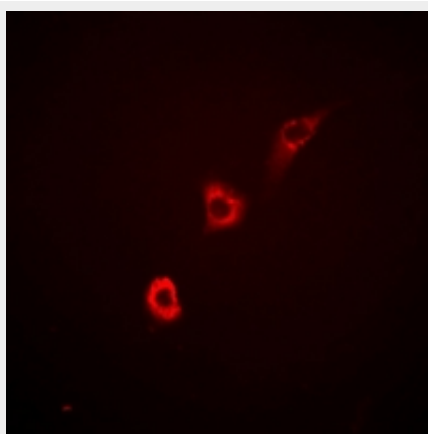
Anti-ITPKA Antibody - Protocols

Provided below are standard protocols that you may find useful for product applications.

- [Western Blot](#)
- [Blocking Peptides](#)
- [Dot Blot](#)
- [Immunohistochemistry](#)
- [Immunofluorescence](#)
- [Immunoprecipitation](#)
- [Flow Cytometry](#)
- [Cell Culture](#)

Anti-ITPKA Antibody - Images

Western blot analysis of ITPKA expression in A549 (A), LO2 (B) whole cell lysates.



Immunofluorescent analysis of ITPKA staining in HepG2 cells. Formalin-fixed cells were permeabilized with 0.1% Triton X-100 in TBS for 5-10 minutes and blocked with 3% BSA-PBS for 30 minutes at room temperature. Cells were probed with the primary antibody in 3% BSA-PBS and incubated overnight at 4 °C in a humidified chamber. Cells were washed with PBST and incubated with Alexa Fluor 647-conjugated secondary antibody (red) in PBS at room temperature in the dark.

Anti-ITPKA Antibody - Background

KLH-conjugated synthetic peptide encompassing a sequence within the C-term region of human ITPKA. The exact sequence is proprietary.