

**Anti-FR beta Antibody**  
**Rabbit polyclonal antibody to FR beta**  
**Catalog # AP60875****Specification**

---

**Anti-FR beta Antibody - Product Information**

Application	<b>WB</b>
Primary Accession	<a href="#">P14207</a>
Other Accession	<a href="#">Q05685</a>
Reactivity	<b>Human, Mouse, Rat</b>
Host	<b>Rabbit</b>
Clonality	<b>Polyclonal</b>
Calculated MW	<b>29280</b>

**Anti-FR beta Antibody - Additional Information****Gene ID** 2350**Other Names**

Folate receptor beta; FR-beta; Folate receptor 2; Folate receptor fetal/placental; Placental folate-binding protein; FBP

**Target/Specificity**

KLH-conjugated synthetic peptide encompassing a sequence within the N-term region of human FR beta. The exact sequence is proprietary.

**Dilution**

WB~~WB (1/500 - 1/1000)

**Format**

Liquid in 0.42% Potassium phosphate, 0.87% Sodium chloride, pH 7.3, 30% glycerol, and 0.09% (W/V) sodium azide.

**Storage**

Store at -20 °C. Stable for 12 months from date of receipt

**Anti-FR beta Antibody - Protein Information****Name** FOLR2**Function**

Binds to folate and reduced folic acid derivatives and mediates delivery of 5-methyltetrahydrofolate and folate analogs into the interior of cells. Has high affinity for folate and folic acid analogs at neutral pH. Exposure to slightly acidic pH after receptor endocytosis triggers a conformation change that strongly reduces its affinity for folates and mediates their release.

**Cellular Location**

Cell membrane; Lipid-anchor, GPI-anchor. Secreted

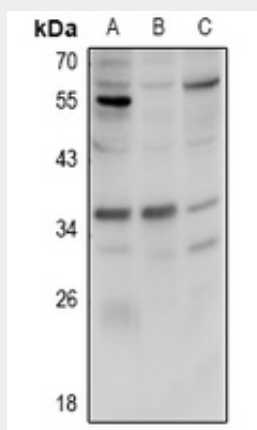
**Tissue Location**

Expressed in placenta and hematopoietic cells. Expression is increased in malignant tissues

**Anti-FR beta Antibody - Protocols**

Provided below are standard protocols that you may find useful for product applications.

- [Western Blot](#)
- [Blocking Peptides](#)
- [Dot Blot](#)
- [Immunohistochemistry](#)
- [Immunofluorescence](#)
- [Immunoprecipitation](#)
- [Flow Cytometry](#)
- [Cell Culture](#)

**Anti-FR beta Antibody - Images**

Western blot analysis of FR beta expression in HCT116 (A), CT26 (B), PC12 (C) whole cell lysates.

**Anti-FR beta Antibody - Background**

KLH-conjugated synthetic peptide encompassing a sequence within the N-term region of human FR beta. The exact sequence is proprietary.