

Anti-IL-15 Antibody
Rabbit polyclonal antibody to IL-15
Catalog # AP60878**Specification**

Anti-IL-15 Antibody - Product Information

Application	WB
Primary Accession	P40933
Other Accession	P48346
Reactivity	Human, Mouse, Rat
Host	Rabbit
Clonality	Polyclonal
Calculated MW	18086

Anti-IL-15 Antibody - Additional Information**Gene ID** 3600**Other Names**

Interleukin-15; IL-15

Target/Specificity

Recognizes endogenous levels of IL-15 protein.

Dilution

WB~~WB (1/500 - 1/1000)

Format

Liquid in 0.42% Potassium phosphate, 0.87% Sodium chloride, pH 7.3, 30% glycerol, and 0.09% (W/V) sodium azide.

Storage

Store at -20 °C.Stable for 12 months from date of receipt

Anti-IL-15 Antibody - Protein Information**Name** IL15**Function**

Cytokine that plays a major role in the development of inflammatory and protective immune responses to microbial invaders and parasites by modulating immune cells of both the innate and adaptive immune systems (PubMed:15123770). Stimulates the proliferation of natural killer cells, T-cells and B-cells and promotes the secretion of several cytokines (PubMed:8178155, PubMed:9326248). In monocytes, induces the production of IL8 and monocyte chemotactic protein 1/CCL2, two chemokines that attract neutrophils and monocytes respectively to sites of infection (PubMed:<a

[9326248](http://www.uniprot.org/citations/9326248)). Unlike most cytokines, which are secreted in soluble form, IL15 is expressed in association with its high affinity IL15RA on the surface of IL15-producing cells and delivers signals to target cells that express IL2RB and IL2RG receptor subunits (PubMed: [10233906](http://www.uniprot.org/citations/10233906), PubMed: [23104097](http://www.uniprot.org/citations/23104097), PubMed: [8026467](http://www.uniprot.org/citations/8026467)). Binding to its receptor triggers the phosphorylation of JAK1 and JAK3 and the recruitment and subsequent phosphorylation of signal transducer and activator of transcription-3/STAT3 and STAT5 (PubMed: [7568001](http://www.uniprot.org/citations/7568001)). In mast cells, induces the rapid tyrosine phosphorylation of STAT6 and thereby controls mast cell survival and release of cytokines such as IL4 (By similarity).

Cellular Location

[Isoform IL15-S48AA]: Secreted.

Tissue Location

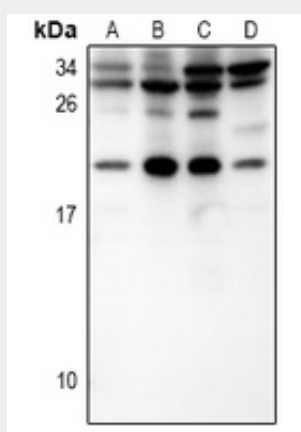
Most abundant in placenta and skeletal muscle. It is also detected in the heart, lung, liver and kidney. IL15-S21AA is preferentially expressed in tissues such as testis and thymus

Anti-IL-15 Antibody - Protocols

Provided below are standard protocols that you may find useful for product applications.

- [Western Blot](#)
- [Blocking Peptides](#)
- [Dot Blot](#)
- [Immunohistochemistry](#)
- [Immunofluorescence](#)
- [Immunoprecipitation](#)
- [Flow Cytometry](#)
- [Cell Culture](#)

Anti-IL-15 Antibody - Images



Western blot analysis of IL-15 expression in HepG2 (A), HEK293T (B), AML12 (C), H9C2 (D) whole cell lysates.

Anti-IL-15 Antibody - Background

KLH-conjugated synthetic peptide encompassing a sequence within the center region of human IL-15. The exact sequence is proprietary.