

**Anti-BID p11 Antibody**  
**Rabbit polyclonal antibody to BID p11**  
**Catalog # AP60883**

**Specification**

---

**Anti-BID p11 Antibody - Product Information**

Application	<b>WB</b>
Primary Accession	<a href="#">P55957</a>
Reactivity	<b>Human</b>
Host	<b>Rabbit</b>
Clonality	<b>Polyclonal</b>
Calculated MW	<b>21995</b>

**Anti-BID p11 Antibody - Additional Information**

**Gene ID** 637

**Other Names**

BH3-interacting domain death agonist; p22 BID; BID

**Target/Specificity**

KLH-conjugated synthetic peptide encompassing a sequence within the center region of human BID p11. The exact sequence is proprietary.

**Dilution**

WB~~WB (1/500 - 1/1000)

**Format**

Liquid in 0.42% Potassium phosphate, 0.87% Sodium chloride, pH 7.3, 30% glycerol, and 0.09% (W/V) sodium azide.

**Storage**

Store at -20 °C. Stable for 12 months from date of receipt

**Anti-BID p11 Antibody - Protein Information**

**Name** BID

**Function**

Induces caspases and apoptosis (PubMed: <a href="http://www.uniprot.org/citations/14583606" target="\_blank">14583606</a>). Counters the protective effect of BCL2 (By similarity).

**Cellular Location**

Cytoplasm. Mitochondrion membrane. Mitochondrion outer membrane. Note=When uncleaved, it is predominantly cytoplasmic. [BH3-interacting domain death agonist p13]: Mitochondrion membrane {ECO:0000250|UniProtKB:P70444}. Note=Associated with the mitochondrial membrane. {ECO:0000250|UniProtKB:P70444} [Isoform 3]: Cytoplasm

### Tissue Location

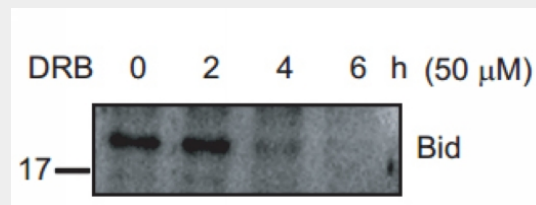
[Isoform 2]: Expressed in spleen, pancreas and placenta (at protein level). [Isoform 4]: Expressed in lung and pancreas (at protein level).

### Anti-BID p11 Antibody - Protocols

Provided below are standard protocols that you may find useful for product applications.

- [Western Blot](#)
- [Blocking Peptides](#)
- [Dot Blot](#)
- [Immunohistochemistry](#)
- [Immunofluorescence](#)
- [Immunoprecipitation](#)
- [Flow Cytometry](#)
- [Cell Culture](#)

### Anti-BID p11 Antibody - Images



Western blot analysis of BID p11 expression in OPM2 (A), OPM2 DRB-treated 2 hours (B), OPM2 DRB-treated 4 hours (C), OPM2 DRB-treated 6 hours (D) whole cell lysates.

### Anti-BID p11 Antibody - Background

KLH-conjugated synthetic peptide encompassing a sequence within the center region of human BID p11. The exact sequence is proprietary.