

Anti-Transglutaminase 3 Antibody
Rabbit polyclonal antibody to Transglutaminase 3
Catalog # AP60884**Specification**

Anti-Transglutaminase 3 Antibody - Product Information

Application	WB
Primary Accession	Q08188
Other Accession	Q08189
Reactivity	Human, Mouse, Rat
Host	Rabbit
Clonality	Polyclonal
Calculated MW	76632

Anti-Transglutaminase 3 Antibody - Additional Information**Gene ID** 7053**Other Names**Protein-glutamine gamma-glutamyltransferase E; Transglutaminase E; TG(E); TGE; TGase E;
Transglutaminase-3; TGase-3**Target/Specificity**

Recognizes endogenous levels of Transglutaminase 3 protein.

Dilution

WB~~WB (1/500 - 1/1000)

Format

Liquid in 0.42% Potassium phosphate, 0.87% Sodium chloride, pH 7.3, 30% glycerol, and 0.09% (W/V) sodium azide.

Storage

Store at -20 °C. Stable for 12 months from date of receipt

Anti-Transglutaminase 3 Antibody - Protein Information**Name** TGM3**Function**

Catalyzes the calcium-dependent formation of isopeptide cross-links between glutamine and lysine residues in various proteins, as well as the conjugation of polyamines to proteins. Involved in the formation of the cornified envelope (CE), a specialized component consisting of covalent cross-links of proteins beneath the plasma membrane of terminally differentiated keratinocytes. Catalyzes small proline-rich proteins (SPRR1 and SPRR2) and LOR cross-linking to form small interchain oligomers, which are further cross-linked by TGM1 onto the growing CE scaffold (By similarity). In hair follicles, involved in cross-linking structural proteins to hardening the inner root sheath.

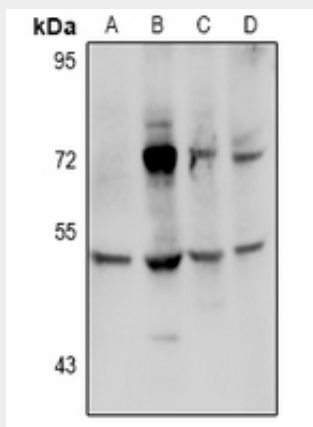
Cellular Location

Cytoplasm.

Anti-Transglutaminase 3 Antibody - Protocols

Provided below are standard protocols that you may find useful for product applications.

- [Western Blot](#)
- [Blocking Peptides](#)
- [Dot Blot](#)
- [Immunohistochemistry](#)
- [Immunofluorescence](#)
- [Immunoprecipitation](#)
- [Flow Cytometry](#)
- [Cell Culture](#)

Anti-Transglutaminase 3 Antibody - Images

Western blot analysis of Transglutaminase 3 expression in LO2 (A), HEK293T (B), CT26 (C), H9C2 (D) whole cell lysates.

Anti-Transglutaminase 3 Antibody - Background

KLH-conjugated synthetic peptide encompassing a sequence within the C-term region of human Transglutaminase 3. The exact sequence is proprietary.