

Anti-FASTKD3 Antibody
Rabbit polyclonal antibody to FASTKD3
Catalog # AP60885**Specification**

Anti-FASTKD3 Antibody - Product Information

Application	WB, IHC
Primary Accession	Q14CZ7
Reactivity	Human, Rat
Host	Rabbit
Clonality	Polyclonal
Calculated MW	75689

Anti-FASTKD3 Antibody - Additional Information**Gene ID** 79072**Other Names**

FAST kinase domain-containing protein 3

Target/Specificity

KLH-conjugated synthetic peptide encompassing a sequence within the center region of human FASTKD3. The exact sequence is proprietary.

Dilution

WB~~WB (1/500 - 1/1000), IH (1/50 - 1/100)

IHC~~1:100~500

Format

Liquid in 0.42% Potassium phosphate, 0.87% Sodium chloride, pH 7.3, 30% glycerol, and 0.09% (W/V) sodium azide.

Storage

Store at -20 °C. Stable for 12 months from date of receipt

Anti-FASTKD3 Antibody - Protein Information**Name** FASTKD3**Function**

Required for normal mitochondrial respiration (PubMed: [20869947](http://www.uniprot.org/citations/20869947)). Increases steady-state levels and half-lives of a subset of mature mitochondrial mRNAs MT-ND2, MT-ND3, MT-CYTB, MT-CO2, and MT-ATP8/6. Promotes MT-CO1 mRNA translation and increases mitochondrial complex IV assembly and activity (PubMed: [27789713](http://www.uniprot.org/citations/27789713)).

Cellular Location

Mitochondrion

Tissue Location

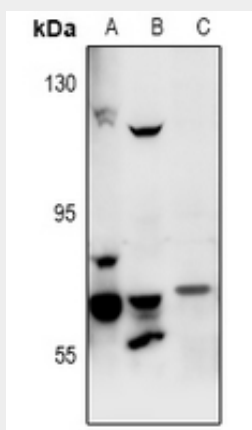
Expression detected in spleen, thymus, testis, ovary, colon, heart, smooth muscle, kidney, brain, lung, liver and white adipose tissue with highest expression in liver and thyroid

Anti-FASTKD3 Antibody - Protocols

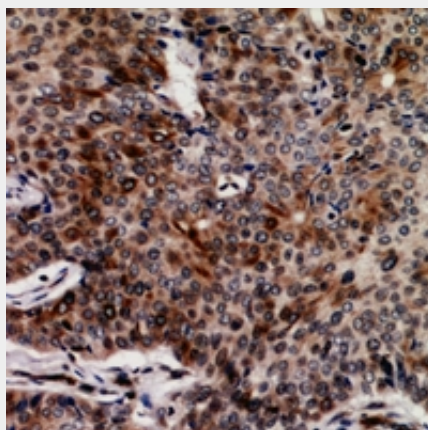
Provided below are standard protocols that you may find useful for product applications.

- [Western Blot](#)
- [Blocking Peptides](#)
- [Dot Blot](#)
- [Immunohistochemistry](#)
- [Immunofluorescence](#)
- [Immunoprecipitation](#)
- [Flow Cytometry](#)
- [Cell Culture](#)

Anti-FASTKD3 Antibody - Images



Western blot analysis of FASTKD3 expression in A549 (A), HeLa (B), rat spleen (C) whole cell lysates.



Immunohistochemical analysis of FASTKD3 staining in human breast cancer formalin fixed paraffin embedded tissue section. The section was pre-treated using heat mediated antigen

retrieval with sodium citrate buffer (pH 6.0). The section was then incubated with the antibody at room temperature and detected using an HRP conjugated compact polymer system. DAB was used as the chromogen. The section was then counterstained with haematoxylin and mounted with DPX.

Anti-FASTKD3 Antibody - Background

KLH-conjugated synthetic peptide encompassing a sequence within the center region of human FASTKD3. The exact sequence is proprietary.