

**Anti-SFXN4 Antibody**  
**Rabbit polyclonal antibody to SFXN4**  
**Catalog # AP60886****Specification**

---

**Anti-SFXN4 Antibody - Product Information**

Application	WB, IF/IC
Primary Accession	<a href="#">Q6P4A7</a>
Reactivity	Human
Host	Rabbit
Clonality	Polyclonal
Calculated MW	37998

**Anti-SFXN4 Antibody - Additional Information****Gene ID** 119559**Other Names**

BCRM1; Sideroflexin-4; Breast cancer resistance marker 1

**Target/Specificity**

Recognizes endogenous levels of SFXN4 protein.

**Dilution**

WB~~WB (1/500 - 1/1000), IF/IC (1/100 - 1/500)

IF/IC~~N/A

**Format**

Liquid in 0.42% Potassium phosphate, 0.87% Sodium chloride, pH 7.3, 30% glycerol, and 0.09% (W/V) sodium azide.

**Storage**

Store at -20 °C. Stable for 12 months from date of receipt

**Anti-SFXN4 Antibody - Protein Information****Name** SFXN4 {ECO:0000303|PubMed:15489334, ECO:0000312|HGNC:HGNC:16088}**Function**

Mitochondrial amino-acid transporter (By similarity). Does not act as a serine transporter: not able to mediate transport of serine into mitochondria (PubMed:&lt;a href="http://www.uniprot.org/citations/30442778" target="\_blank"&gt;30442778&lt;/a&gt;).

**Cellular Location**

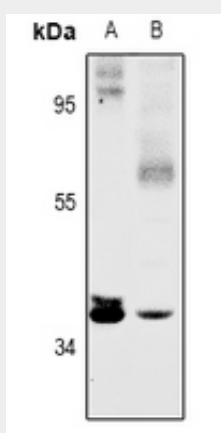
Mitochondrion inner membrane; Multi-pass membrane protein

## Anti-SFXN4 Antibody - Protocols

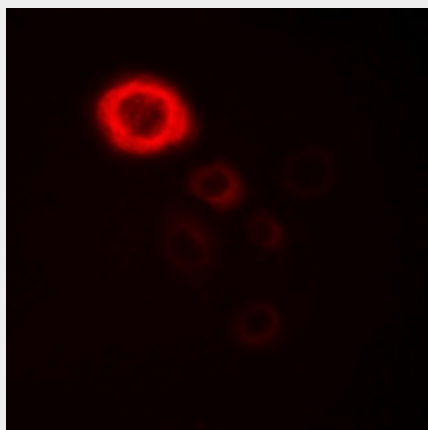
Provided below are standard protocols that you may find useful for product applications.

- [Western Blot](#)
- [Blocking Peptides](#)
- [Dot Blot](#)
- [Immunohistochemistry](#)
- [Immunofluorescence](#)
- [Immunoprecipitation](#)
- [Flow Cytometry](#)
- [Cell Culture](#)

## Anti-SFXN4 Antibody - Images



Western blot analysis of SFXN4 expression in HEK293T (A), DLD (B) whole cell lysates.



Immunofluorescent analysis of SFXN4 staining in COS7 cells. Formalin-fixed cells were permeabilized with 0.1% Triton X-100 in TBS for 5-10 minutes and blocked with 3% BSA-PBS for 30 minutes at room temperature. Cells were probed with the primary antibody in 3% BSA-PBS and incubated overnight at 4 °C in a humidified chamber. Cells were washed with PBST and incubated with Alexa Fluor 647-conjugated secondary antibody (red) in PBS at room temperature in the dark.

## Anti-SFXN4 Antibody - Background

KLH-conjugated synthetic peptide encompassing a sequence within the N-term region of human SFXN4. The exact sequence is proprietary.