

**Anti-CLK4 Antibody**  
**Rabbit polyclonal antibody to CLK4**  
**Catalog # AP60889****Specification**

---

**Anti-CLK4 Antibody - Product Information**

Application	WB, IHC
Primary Accession	<a href="#">O9HAZ1</a>
Other Accession	<a href="#">O35493</a>
Reactivity	Human, Mouse, Rat
Host	Rabbit
Clonality	Polyclonal
Calculated MW	57492

**Anti-CLK4 Antibody - Additional Information****Gene ID** 57396**Other Names**

Dual specificity protein kinase CLK4; CDC-like kinase 4

**Target/Specificity**

KLH-conjugated synthetic peptide encompassing a sequence within the center region of human CLK4. The exact sequence is proprietary.

**Dilution**

WB~~WB (1/500 - 1/1000), IH (1/50 - 1/100)

IHC~~1:100~500

**Format**

Liquid in 0.42% Potassium phosphate, 0.87% Sodium chloride, pH 7.3, 30% glycerol, and 0.09% (W/V) sodium azide.

**Storage**

Store at -20 °C. Stable for 12 months from date of receipt

**Anti-CLK4 Antibody - Protein Information****Name** CLK4**Function**

Dual specificity kinase acting on both serine/threonine and tyrosine-containing substrates. Phosphorylates serine- and arginine- rich (SR) proteins of the spliceosomal complex and may be a constituent of a network of regulatory mechanisms that enable SR proteins to control RNA splicing. Phosphorylates SRSF1 and SRSF3. Required for the regulation of alternative splicing of MAPT/TAU. Regulates the alternative splicing of tissue factor (F3) pre-mRNA in endothelial cells.

**Cellular Location**

Nucleus.

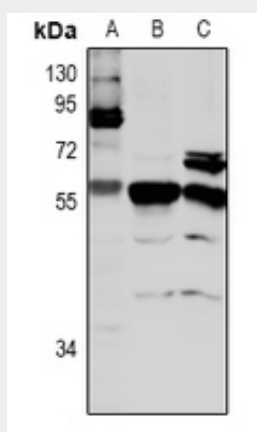
**Tissue Location**

Expressed in liver, kidney, heart, muscle, brain and endothelial cells.

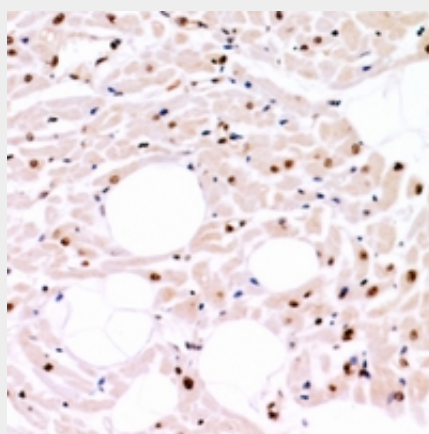
**Anti-CLK4 Antibody - Protocols**

Provided below are standard protocols that you may find useful for product applications.

- [Western Blot](#)
- [Blocking Peptides](#)
- [Dot Blot](#)
- [Immunohistochemistry](#)
- [Immunofluorescence](#)
- [Immunoprecipitation](#)
- [Flow Cytometry](#)
- [Cell Culture](#)

**Anti-CLK4 Antibody - Images**

Western blot analysis of CLK4 expression in HCT116 (A), rat brain (B), mouse brain (C) whole cell lysates.



Immunohistochemical analysis of CLK4 staining in human heart formalin fixed paraffin embedded tissue section. The section was pre-treated using heat mediated antigen retrieval with sodium citrate buffer (pH 6.0). The section was then incubated with the antibody at room temperature

and detected using an HRP conjugated compact polymer system. DAB was used as the chromogen. The section was then counterstained with haematoxylin and mounted with DPX.

**Anti-CLK4 Antibody - Background**

KLH-conjugated synthetic peptide encompassing a sequence within the center region of human CLK4. The exact sequence is proprietary.