

Anti-Pinin Antibody
Rabbit polyclonal antibody to Pinin
Catalog # AP60899**Specification**

Anti-Pinin Antibody - Product Information

Application	WB
Primary Accession	O9H307
Other Accession	O35691
Reactivity	Human, Mouse, Rat, Bovine, Dog
Host	Rabbit
Clonality	Polyclonal
Calculated MW	81628

Anti-Pinin Antibody - Additional Information**Gene ID** 5411**Other Names**

DRS; MEMA; Pinin; 140 kDa nuclear and cell adhesion-related phosphoprotein; Desmosome-associated protein; Domain-rich serine protein; DRS protein; DRSP; Melanoma metastasis clone A protein; Nuclear protein SDK3; SR-like protein

Target/Specificity

KLH-conjugated synthetic peptide encompassing a sequence within the center region of human Pinin. The exact sequence is proprietary.

Dilution

WB~~WB (1/500 - 1/1000)

Format

Liquid in 0.42% Potassium phosphate, 0.87% Sodium chloride, pH 7.3, 30% glycerol, and 0.09% (W/V) sodium azide.

Storage

Store at -20 °C. Stable for 12 months from date of receipt

Anti-Pinin Antibody - Protein Information**Name** PNN**Synonyms** DRS, MEMA**Function**

Transcriptional activator binding to the E-box 1 core sequence of the E-cadherin promoter gene; the core-binding sequence is 5'CAGGTG-3'. Capable of reversing CTBP1-mediated transcription repression. Auxiliary component of the splicing-dependent multiprotein exon junction complex (EJC) deposited at splice junction on mRNAs. The EJC is a dynamic structure consisting of core

proteins and several peripheral nuclear and cytoplasmic associated factors that join the complex only transiently either during EJC assembly or during subsequent mRNA metabolism. Participates in the regulation of alternative pre-mRNA splicing. Associates to spliced mRNA within 60 nt upstream of the 5'-splice sites. Component of the PSAP complex which binds RNA in a sequence-independent manner and is proposed to be recruited to the EJC prior to or during the splicing process and to regulate specific excision of introns in specific transcription subsets. Involved in the establishment and maintenance of epithelia cell-cell adhesion. Potential tumor suppressor for renal cell carcinoma.

Cellular Location

Nucleus speckle. Cell junction, desmosome. Note=Cell-cell contact area, predominantly desmosome of intercellular adherens junction. Not a nucleocytoplasmic shuttling protein

Tissue Location

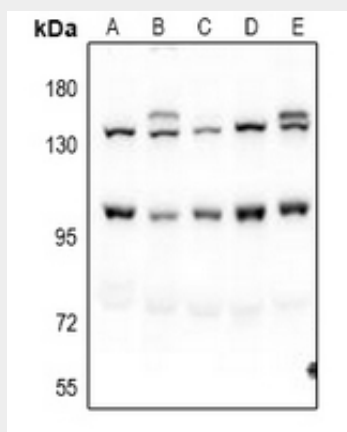
Expressed in placenta, lung, liver, kidney, pancreas, spleen, thymus, prostate, testis, ovary, small intestine, colon, heart, epidermis, esophagus, brain and smooth and skeletal muscle. Expressed strongly in melanoma metastasis lesions and advanced primary tumors.

Anti-Pinin Antibody - Protocols

Provided below are standard protocols that you may find useful for product applications.

- [Western Blot](#)
- [Blocking Peptides](#)
- [Dot Blot](#)
- [Immunohistochemistry](#)
- [Immunofluorescence](#)
- [Immunoprecipitation](#)
- [Flow Cytometry](#)
- [Cell Culture](#)

Anti-Pinin Antibody - Images



Western blot analysis of Pinin expression in C6 (A), PC12 (B), CT26 (C), HCT116 (D), HepG2 (E) whole cell lysates.

Anti-Pinin Antibody - Background

KLH-conjugated synthetic peptide encompassing a sequence within the center region of human Pinin. The exact sequence is proprietary.