

Anti-NuSAP Antibody
Rabbit polyclonal antibody to NuSAP
Catalog # AP60903**Specification**

Anti-NuSAP Antibody - Product Information

Application	WB
Primary Accession	Q9BXS6
Other Accession	Q9ERH4
Reactivity	Human, Mouse, Rat, Bovine, Dog
Host	Rabbit
Clonality	Polyclonal
Calculated MW	49452

Anti-NuSAP Antibody - Additional Information**Gene ID** 51203**Other Names**

ANKT; Nucleolar and spindle-associated protein 1; NuSAP

Target/Specificity

KLH-conjugated synthetic peptide encompassing a sequence within the C-term region of human NuSAP. The exact sequence is proprietary.

Dilution

WB~~WB (1/500 - 1/1000)

Format

Liquid in 0.42% Potassium phosphate, 0.87% Sodium chloride, pH 7.3, 30% glycerol, and 0.09% (W/V) sodium azide.

Storage

Store at -20 °C. Stable for 12 months from date of receipt

Anti-NuSAP Antibody - Protein Information**Name** NUSAP1**Synonyms** ANKT**Function**

Microtubule-associated protein with the capacity to bundle and stabilize microtubules (By similarity). May associate with chromosomes and promote the organization of mitotic spindle microtubules around them.

Cellular Location

Cytoplasm. Nucleus, nucleolus. Cytoplasm, cytoskeleton, spindle Chromosome. Note=Found in the

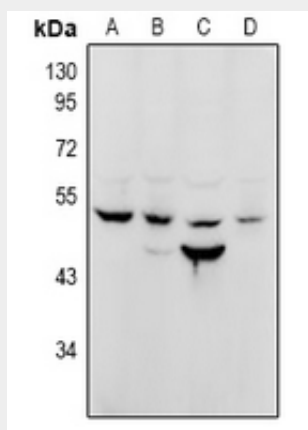
cytoplasm and nucleolus during interphase and redistributes to the mitotic spindle in prometaphase (By similarity). Localizes to the mitotic spindle during anaphase and telophase then disappears from around the chromosomes during cytokinesis (By similarity). Localizes to multiple distinct regions of chromosomes throughout mitosis. {ECO:0000250, ECO:0000269|PubMed:17276916, ECO:0000269|PubMed:17618083}

Anti-NuSAP Antibody - Protocols

Provided below are standard protocols that you may find useful for product applications.

- [Western Blot](#)
- [Blocking Peptides](#)
- [Dot Blot](#)
- [Immunohistochemistry](#)
- [Immunofluorescence](#)
- [Immunoprecipitation](#)
- [Flow Cytometry](#)
- [Cell Culture](#)

Anti-NuSAP Antibody - Images



Western blot analysis of NuSAP expression in CT26 (A), PC12 (B), HCT116 (C), PC3 (D) whole cell lysates.

Anti-NuSAP Antibody - Background

KLH-conjugated synthetic peptide encompassing a sequence within the C-term region of human NuSAP. The exact sequence is proprietary.