

Anti-LAT (pY161) Antibody
Rabbit polyclonal antibody to LAT (pY161)
Catalog # AP60916**Specification**

Anti-LAT (pY161) Antibody - Product Information

| | |
|-------------------|------------------------|
| Application | WB |
| Primary Accession | O43561 |
| Other Accession | O54957 |
| Reactivity | Human, Mouse, Rat |
| Host | Rabbit |
| Clonality | Polyclonal |
| Calculated MW | 27930 |

Anti-LAT (pY161) Antibody - Additional Information**Gene ID** 27040**Other Names**

Linker for activation of T-cells family member 1; 36 kDa phospho-tyrosine adapter protein; pp36; p36-38

Target/Specificity

KLH-conjugated synthetic peptide encompassing a sequence within the center region of human LAT. The exact sequence is proprietary.

Dilution

WB~~WB (1/500 - 1/1000)

Format

Liquid in 0.42% Potassium phosphate, 0.87% Sodium chloride, pH 7.3, 30% glycerol, and 0.09% (W/V) sodium azide.

Storage

Store at -20 °C. Stable for 12 months from date of receipt

Anti-LAT (pY161) Antibody - Protein Information**Name** LAT**Function**

Required for TCR (T-cell antigen receptor)- and pre-TCR- mediated signaling, both in mature T-cells and during their development (PubMed:23514740, PubMed:25907557). Involved in FCGR3 (low affinity immunoglobulin gamma Fc region receptor III)-mediated signaling in natural killer cells and FCER1 (high affinity immunoglobulin epsilon receptor)-mediated signaling in mast cells. Couples activation of these receptors and their associated kinases with distal intracellular events such as mobilization of

intracellular calcium stores, PKC activation, MAPK activation or cytoskeletal reorganization through the recruitment of PLCG1, GRB2, GRAP2, and other signaling molecules.

Cellular Location

Cell membrane; Single-pass type III membrane protein. Note=Present in lipid rafts

Tissue Location

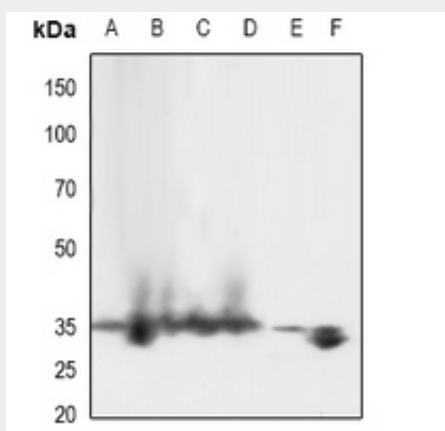
Expressed in thymus, T-cells, NK cells, mast cells and, at lower levels, in spleen. Present in T-cells but not B-cells (at protein level).

Anti-LAT (pY161) Antibody - Protocols

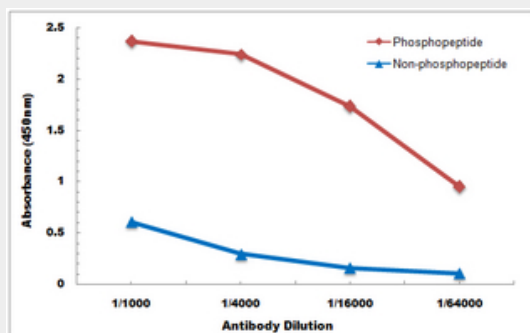
Provided below are standard protocols that you may find useful for product applications.

- [Western Blot](#)
- [Blocking Peptides](#)
- [Dot Blot](#)
- [Immunohistochemistry](#)
- [Immunofluorescence](#)
- [Immunoprecipitation](#)
- [Flow Cytometry](#)
- [Cell Culture](#)

Anti-LAT (pY161) Antibody - Images



Western blot analysis of LAT (pY161) expression in rat heart (A), rat lung (B), mouse heart (C), mouse lung (D), HEK293T (E), Jurkat (F) whole cell lysates.



Direct ELISA antibody dose-response curve using Anti-LAT (pY161) Antibody. Antigen

(phosphopeptide and non-phosphopeptide) concentration is 5 ug/ml. Goat Anti-Rabbit IgG (H&L) - HRP was used as the secondary antibody, and signal was developed by TMB substrate.

Anti-LAT (pY161) Antibody - Background

KLH-conjugated synthetic peptide encompassing a sequence within the center region of human LAT. The exact sequence is proprietary.