

Anti-ETS1 (pS251) Antibody
Rabbit polyclonal antibody to ETS1 (pS251)
Catalog # AP60937**Specification**

Anti-ETS1 (pS251) Antibody - Product Information

Application	WB, IHC
Primary Accession	P14921
Other Accession	P27577
Reactivity	Human, Mouse, Rat, Chicken
Host	Rabbit
Clonality	Polyclonal
Calculated MW	50408

Anti-ETS1 (pS251) Antibody - Additional Information**Gene ID** 2113**Other Names**

EWSR2; Protein C-ets-1; p54

Target/Specificity

KLH-conjugated synthetic peptide encompassing a sequence within the center region of human ETS1. The exact sequence is proprietary.

Dilution

WB~~WB (1/500 - 1/1000), IH (1/50 - 1/100)

IHC~~1:100~500

Format

Liquid in 0.42% Potassium phosphate, 0.87% Sodium chloride, pH 7.3, 30% glycerol, and 0.09% (W/V) sodium azide.

Storage

Store at -20 °C. Stable for 12 months from date of receipt

Anti-ETS1 (pS251) Antibody - Protein Information**Name** ETS1**Synonyms** EWSR2**Function**

Transcription factor (PubMed: [10698492](http://www.uniprot.org/citations/10698492) target="_blank">10698492, PubMed: [11909962](http://www.uniprot.org/citations/11909962) target="_blank">11909962). Directly controls the expression of cytokine and chemokine genes in a wide variety of different cellular contexts (PubMed: [20378371](http://www.uniprot.org/citations/20378371) target="_blank">20378371). May control

the differentiation, survival and proliferation of lymphoid cells (PubMed:20378371). May also regulate angiogenesis through regulation of expression of genes controlling endothelial cell migration and invasion (PubMed:15247905, PubMed:15592518).

Cellular Location

Nucleus. Cytoplasm Note=Delocalizes from nucleus to cytoplasm when coexpressed with isoform Ets-1 p27.

Tissue Location

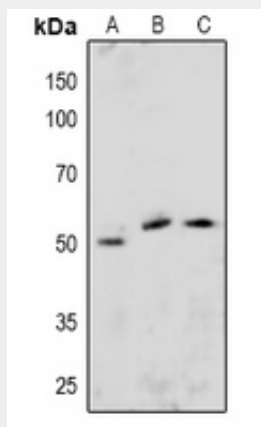
Highly expressed within lymphoid cells. Isoforms c- ETS-1A and Ets-1 p27 are both detected in all fetal tissues tested, but vary with tissue type in adult tissues. None is detected in brain or kidney.

Anti-ETS1 (pS251) Antibody - Protocols

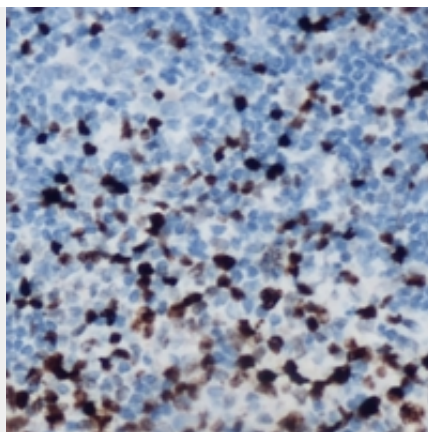
Provided below are standard protocols that you may find useful for product applications.

- [Western Blot](#)
- [Blocking Peptides](#)
- [Dot Blot](#)
- [Immunohistochemistry](#)
- [Immunofluorescence](#)
- [Immunoprecipitation](#)
- [Flow Cytometry](#)
- [Cell Culture](#)

Anti-ETS1 (pS251) Antibody - Images



Western blot analysis of ETS1 (pS251) expression in Hela (A), NIH3T3 (B), H9C2 (C) whole cell lysates.



Immunohistochemical analysis of ETS1 (pS251) staining in human lymph node formalin fixed paraffin embedded tissue section. The section was pre-treated using heat mediated antigen retrieval with sodium citrate buffer (pH 6.0). The section was then incubated with the antibody at room temperature and detected using an HRP conjugated compact polymer system. DAB was used as the chromogen. The section was then counterstained with haematoxylin and mounted with DPX.

Anti-ETS1 (pS251) Antibody - Background

KLH-conjugated synthetic peptide encompassing a sequence within the center region of human ETS1. The exact sequence is proprietary.