

**Anti-LAT Antibody**  
**Rabbit polyclonal antibody to LAT**  
**Catalog # AP60940****Specification**

---

**Anti-LAT Antibody - Product Information**

Application	WB
Primary Accession	<a href="#">O43561</a>
Reactivity	Human
Host	Rabbit
Clonality	Polyclonal
Calculated MW	27930

**Anti-LAT Antibody - Additional Information****Gene ID** 27040**Other Names**

Linker for activation of T-cells family member 1; 36 kDa phospho-tyrosine adapter protein; pp36; p36-38

**Target/Specificity**

KLH-conjugated synthetic peptide encompassing a sequence within the center region of human LAT. The exact sequence is proprietary.

**Dilution**

WB~~WB (1/500 - 1/1000)

**Format**

Liquid in 0.42% Potassium phosphate, 0.87% Sodium chloride, pH 7.3, 30% glycerol, and 0.09% (W/V) sodium azide.

**Storage**

Store at -20 °C. Stable for 12 months from date of receipt

**Anti-LAT Antibody - Protein Information****Name** LAT**Function**

Required for TCR (T-cell antigen receptor)- and pre-TCR- mediated signaling, both in mature T-cells and during their development (PubMed:<a href="http://www.uniprot.org/citations/23514740" target="\_blank">23514740</a>, PubMed:<a href="http://www.uniprot.org/citations/25907557" target="\_blank">25907557</a>). Involved in FCGR3 (low affinity immunoglobulin gamma Fc region receptor III)-mediated signaling in natural killer cells and FCER1 (high affinity immunoglobulin epsilon receptor)-mediated signaling in mast cells. Couples activation of these receptors and their associated kinases with distal intracellular events such as mobilization of intracellular calcium stores, PKC activation, MAPK activation or cytoskeletal reorganization through

the recruitment of PLCG1, GRB2, GRAP2, and other signaling molecules.

**Cellular Location**

Cell membrane; Single-pass type III membrane protein. Note=Present in lipid rafts

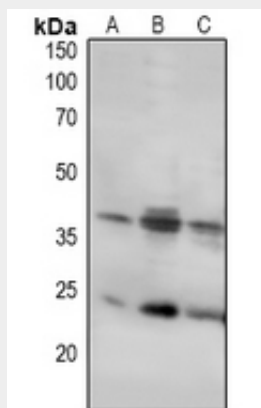
**Tissue Location**

Expressed in thymus, T-cells, NK cells, mast cells and, at lower levels, in spleen. Present in T-cells but not B-cells (at protein level).

**Anti-LAT Antibody - Protocols**

Provided below are standard protocols that you may find useful for product applications.

- [Western Blot](#)
- [Blocking Peptides](#)
- [Dot Blot](#)
- [Immunohistochemistry](#)
- [Immunofluorescence](#)
- [Immunoprecipitation](#)
- [Flow Cytometry](#)
- [Cell Culture](#)

**Anti-LAT Antibody - Images**

Western blot analysis of LAT expression in HepG2 (A), HEK293T (B), HeLa (C) whole cell lysates.

**Anti-LAT Antibody - Background**

KLH-conjugated synthetic peptide encompassing a sequence within the center region of human LAT. The exact sequence is proprietary.