

**Anti-NACA1 Antibody**  
**Rabbit polyclonal antibody to NACA1**  
**Catalog # AP60941****Specification**

---

**Anti-NACA1 Antibody - Product Information**

Application	WB
Primary Accession	<a href="#">Q13765</a>
Other Accession	<a href="#">Q60817</a>
Reactivity	Human, Mouse, Rat, Bovine
Host	Rabbit
Clonality	Polyclonal
Calculated MW	23384

**Anti-NACA1 Antibody - Additional Information****Gene ID** 4666**Other Names**

Nascent polypeptide-associated complex subunit alpha; NAC-alpha; Alpha-NAC; allergen Hom s 2

**Target/Specificity**

KLH-conjugated synthetic peptide encompassing a sequence within the N-term region of human NACA1. The exact sequence is proprietary.

**Dilution**

WB~~WB (1/500 - 1/1000)

**Format**

Liquid in 0.42% Potassium phosphate, 0.87% Sodium chloride, pH 7.3, 30% glycerol, and 0.09% (W/V) sodium azide.

**Storage**

Store at -20 °C.Stable for 12 months from date of receipt

**Anti-NACA1 Antibody - Protein Information****Name** NACA**Function**

Prevents inappropriate targeting of non-secretory polypeptides to the endoplasmic reticulum (ER). Binds to nascent polypeptide chains as they emerge from the ribosome and blocks their interaction with the signal recognition particle (SRP), which normally targets nascent secretory peptides to the ER. Also reduces the inherent affinity of ribosomes for protein translocation sites in the ER membrane (M sites). May act as a specific coactivator for JUN, binding to DNA and stabilizing the interaction of JUN homodimers with target gene promoters.

**Cellular Location**

Cytoplasm. Nucleus. Note=The heterodimer is located mainly in the cytosol, and the homodimer in the nucleus.

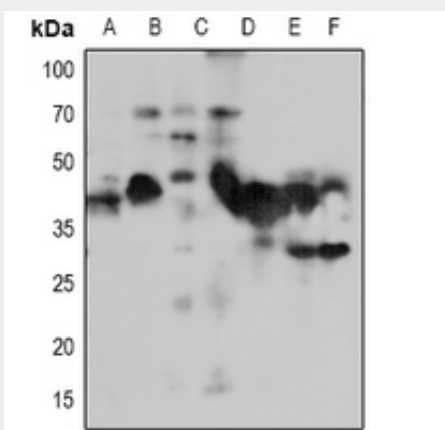
**Tissue Location**

Ubiquitously expressed.

**Anti-NACA1 Antibody - Protocols**

Provided below are standard protocols that you may find useful for product applications.

- [Western Blot](#)
- [Blocking Peptides](#)
- [Dot Blot](#)
- [Immunohistochemistry](#)
- [Immunofluorescence](#)
- [Immunoprecipitation](#)
- [Flow Cytometry](#)
- [Cell Culture](#)

**Anti-NACA1 Antibody - Images**

Western blot analysis of NACA1 expression in Hela (A), HEK293T (B), Jurkat (C), NIH3T3 (D), CT26 (E), H9C2 (F), PC12 (G) whole cell lysates.

**Anti-NACA1 Antibody - Background**

KLH-conjugated synthetic peptide encompassing a sequence within the N-term region of human NACA1. The exact sequence is proprietary.