

Anti-CLIC6 Antibody
Rabbit polyclonal antibody to CLIC6
Catalog # AP60944**Specification**

Anti-CLIC6 Antibody - Product Information

Application	WB
Primary Accession	Q96NY7
Other Accession	Q8BHB9
Reactivity	Human, Mouse, Rat
Host	Rabbit
Clonality	Polyclonal
Calculated MW	73012

Anti-CLIC6 Antibody - Additional Information**Gene ID** 54102**Other Names**

CLIC1L; Chloride intracellular channel protein 6; Parchorin

Target/Specificity

Recognizes endogenous levels of CLIC6 protein.

Dilution

WB~~WB (1/500 - 1/1000)

Format

Liquid in 0.42% Potassium phosphate, 0.87% Sodium chloride, pH 7.3, 30% glycerol, and 0.09% (W/V) sodium azide.

Storage

Store at -20 °C. Stable for 12 months from date of receipt

Anti-CLIC6 Antibody - Protein Information**Name** CLIC6**Synonyms** CLIC1L**Function**

May insert into membranes and form chloride ion channels. May play a critical role in water-secreting cells, possibly through the regulation of chloride ion transport (By similarity).

Cellular Location

Cytoplasm. Cell membrane; Single-pass membrane protein Note=Predominantly cytoplasmic. Upon chloride ion efflux from the cell, it is translocated to the plasma membrane (By similarity)

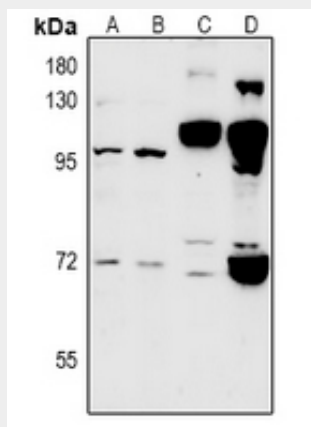
Tissue Location

Expressed in brain, placenta, pancreas and liver.

Anti-CLIC6 Antibody - Protocols

Provided below are standard protocols that you may find useful for product applications.

- [Western Blot](#)
- [Blocking Peptides](#)
- [Dot Blot](#)
- [Immunohistochemistry](#)
- [Immunofluorescence](#)
- [Immunoprecipitation](#)
- [Flow Cytometry](#)
- [Cell Culture](#)

Anti-CLIC6 Antibody - Images

Western blot analysis of CLIC6 expression in A549 (A), LO2 (B), AML12 (C), PC12 (D) whole cell lysates.

Anti-CLIC6 Antibody - Background

KLH-conjugated synthetic peptide encompassing a sequence within the center region of human CLIC6. The exact sequence is proprietary.