

Anti-DNA Polymerase iota Antibody
Rabbit polyclonal antibody to DNA Polymerase iota
Catalog # AP60950

Specification

Anti-DNA Polymerase iota Antibody - Product Information

Application	WB
Primary Accession	O9UNA4
Reactivity	Human, Monkey
Host	Rabbit
Clonality	Polyclonal
Calculated MW	83006

Anti-DNA Polymerase iota Antibody - Additional Information

Gene ID 11201

Other Names

RAD30B; DNA polymerase iota; Eta2; RAD30 homolog B

Target/Specificity

KLH-conjugated synthetic peptide encompassing a sequence within the C-term region of human DNA Polymerase iota. The exact sequence is proprietary.

Dilution

WB~~WB (1/500 - 1/1000)

Format

Liquid in 0.42% Potassium phosphate, 0.87% Sodium chloride, pH 7.3, 30% glycerol, and 0.09% (W/V) sodium azide.

Storage

Store at -20 °C. Stable for 12 months from date of receipt

Anti-DNA Polymerase iota Antibody - Protein Information

Name POLI

Synonyms RAD30B

Function

Error-prone DNA polymerase specifically involved in DNA repair (PubMed: [11013228](http://www.uniprot.org/citations/11013228), PubMed: [11387224](http://www.uniprot.org/citations/11387224)). Plays an important role in translesion synthesis, where the normal high-fidelity DNA polymerases cannot proceed and DNA synthesis stalls (PubMed: [11013228](http://www.uniprot.org/citations/11013228), PubMed: [11387224](http://www.uniprot.org/citations/11387224), PubMed: [14630940](http://www.uniprot.org/citations/14630940)).

target="_blank">14630940, PubMed:15199127). Favors Hoogsteen base-pairing in the active site (PubMed:15254543). Inserts the correct base with high-fidelity opposite an adenosine template (PubMed:15254543). Exhibits low fidelity and efficiency opposite a thymidine template, where it will preferentially insert guanosine (PubMed:11013228). May play a role in hypermutation of immunoglobulin genes (PubMed:12410315). Forms a Schiff base with 5'-deoxyribose phosphate at abasic sites, but may not have lyase activity (PubMed:11251121, PubMed:14630940).

Cellular Location

Nucleus. Note=Binding to ubiquitin mediates localization to replication forks after UV-induced DNA damage. {ECO:0000250|UniProtKB:Q6R3M4}

Tissue Location

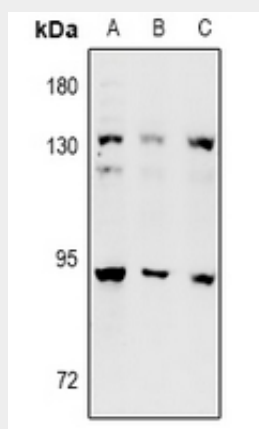
Ubiquitous. Highly expressed in testis.

Anti-DNA Polymerase iota Antibody - Protocols

Provided below are standard protocols that you may find useful for product applications.

- [Western Blot](#)
- [Blocking Peptides](#)
- [Dot Blot](#)
- [Immunohistochemistry](#)
- [Immunofluorescence](#)
- [Immunoprecipitation](#)
- [Flow Cytometry](#)
- [Cell Culture](#)

Anti-DNA Polymerase iota Antibody - Images



Western blot analysis of DNA Polymerase iota expression in A549 (A), U87MG (B), MCF7 (C) whole cell lysates.

Anti-DNA Polymerase iota Antibody - Background

KLH-conjugated synthetic peptide encompassing a sequence within the C-term region of human

DNA Polymerase iota. The exact sequence is proprietary.