

Anti-hnRNP CL1 Antibody
Rabbit polyclonal antibody to hnRNP CL1
Catalog # AP60961**Specification**

Anti-hnRNP CL1 Antibody - Product Information

Application	WB
Primary Accession	O60812
Reactivity	Human, Mouse
Host	Rabbit
Clonality	Polyclonal
Calculated MW	32142

Anti-hnRNP CL1 Antibody - Additional Information**Gene ID** 343069**Other Names**

HNRPCL1; Heterogeneous nuclear ribonucleoprotein C-like 1; hnRNP C-like-1; hnRNP core protein C-like 1

Target/Specificity

Recognizes endogenous levels of hnRNP CL1 protein.

Dilution

WB~~WB (1/500 - 1/1000)

Format

Liquid in 0.42% Potassium phosphate, 0.87% Sodium chloride, pH 7.3, 30% glycerol, and 0.09% (W/V) sodium azide.

Storage

Store at -20 °C. Stable for 12 months from date of receipt

Anti-hnRNP CL1 Antibody - Protein Information**Name** HNRNPCL1**Synonyms** HNRPCL1**Function**

May play a role in nucleosome assembly by neutralizing basic proteins such as A and B core hnRNPs.

Cellular Location

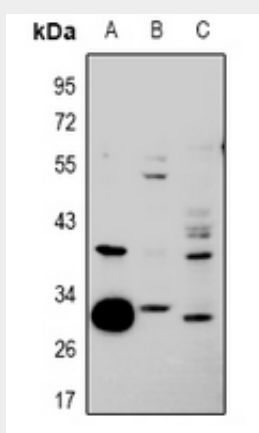
Nucleus. Note=Component of ribonucleosomes.

Anti-hnRNP CL1 Antibody - Protocols

Provided below are standard protocols that you may find useful for product applications.

- [Western Blot](#)
- [Blocking Peptides](#)
- [Dot Blot](#)
- [Immunohistochemistry](#)
- [Immunofluorescence](#)
- [Immunoprecipitation](#)
- [Flow Cytometry](#)
- [Cell Culture](#)

Anti-hnRNP CL1 Antibody - Images



Western blot analysis of hnRNP CL1 expression in A549 (A), HEK293T (B), MEF (C) whole cell lysates.

Anti-hnRNP CL1 Antibody - Background

KLH-conjugated synthetic peptide encompassing a sequence within the center region of human hnRNP CL1. The exact sequence is proprietary.