

**Anti-MSX2 Antibody**  
**Rabbit polyclonal antibody to MSX2**  
**Catalog # AP60964****Specification**

---

**Anti-MSX2 Antibody - Product Information**

Application	WB, IHC
Primary Accession	<a href="#">P35548</a>
Other Accession	<a href="#">Q03358</a>
Reactivity	Human, Mouse, Rat
Host	Rabbit
Clonality	Polyclonal
Calculated MW	28897

**Anti-MSX2 Antibody - Additional Information****Gene ID** 4488**Other Names**

HOX8; Homeobox protein MSX-2; Homeobox protein Hox-8

**Target/Specificity**

Recognizes endogenous levels of MSX2 protein.

**Dilution**

WB~~WB (1/500 - 1/1000), IH (1/50 - 1/100)

IHC~~1:100~500

**Format**

Liquid in 0.42% Potassium phosphate, 0.87% Sodium chloride, pH 7.3, 30% glycerol, and 0.09% (W/V) sodium azide.

**Storage**

Store at -20 °C. Stable for 12 months from date of receipt

**Anti-MSX2 Antibody - Protein Information****Name** MSX2**Synonyms** HOX8**Function**

Acts as a transcriptional regulator in bone development. Represses the ALPL promoter activity and antagonizes the stimulatory effect of DLX5 on ALPL expression during osteoblast differentiation. Probable morphogenetic role. May play a role in limb-pattern formation. In osteoblasts, suppresses transcription driven by the osteocalcin FGF response element (OCFRE). Binds to the homeodomain-response element of the ALPL promoter.

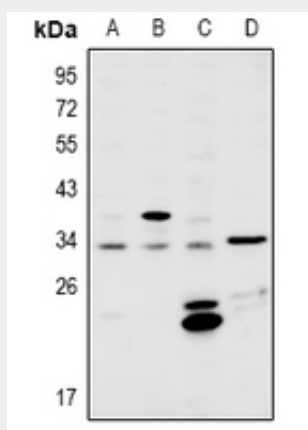
**Cellular Location**

Nucleus.

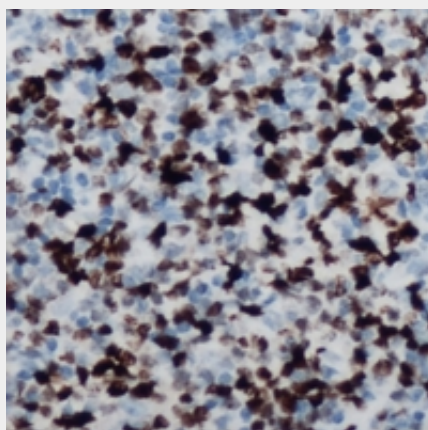
**Anti-MSX2 Antibody - Protocols**

Provided below are standard protocols that you may find useful for product applications.

- [Western Blot](#)
- [Blocking Peptides](#)
- [Dot Blot](#)
- [Immunohistochemistry](#)
- [Immunofluorescence](#)
- [Immunoprecipitation](#)
- [Flow Cytometry](#)
- [Cell Culture](#)

**Anti-MSX2 Antibody - Images**

Western blot analysis of MSX2 expression in A549 (A), HEK293T (B), MEF (C), H9C2 (D) whole cell lysates.



Immunohistochemical analysis of MSX2 staining in human lymph node formalin fixed paraffin embedded tissue section. The section was pre-treated using heat mediated antigen retrieval with sodium citrate buffer (pH 6.0). The section was then incubated with the antibody at room temperature and detected using an HRP conjugated compact polymer system. DAB was used as the chromogen. The section was then counterstained with haematoxylin and mounted with DPX.

**Anti-MSX2 Antibody - Background**

KLH-conjugated synthetic peptide encompassing a sequence within the center region of human MSX2. The exact sequence is proprietary.