

Anti-USP50 Antibody
Rabbit polyclonal antibody to USP50
Catalog # AP60966**Specification**

Anti-USP50 Antibody - Product Information

Application	WB, IHC
Primary Accession	Q70EL3
Other Accession	Q6P8X6
Reactivity	Human, Mouse, Rat
Host	Rabbit
Clonality	Polyclonal
Calculated MW	38955

Anti-USP50 Antibody - Additional Information**Gene ID** 373509**Other Names**

Inactive ubiquitin carboxyl-terminal hydrolase 50; Inactive ubiquitin-specific peptidase 50

Target/Specificity

Recognizes endogenous levels of USP50 protein.

Dilution

WB~~WB (1/500 - 1/1000), IH (1/50 - 1/100)

IHC~~1:100~500

Format

Liquid in 0.42% Potassium phosphate, 0.87% Sodium chloride, pH 7.3, 30% glycerol, and 0.09% (W/V) sodium azide.

Storage

Store at -20 °C. Stable for 12 months from date of receipt

Anti-USP50 Antibody - Protein Information**Name** USP50 ([HGNC:20079](#))**Function**

Deubiquitinating enzyme that removes conjugated ubiquitin from specific proteins to regulate different cellular processes. Regulates the inflammasome signaling pathway by deubiquitinating 'Lys- 63'-linked polyubiquitination of the PYCARD/ASC adapter protein (PubMed:28094437). Regulates the ubiquitination and stability of the ACE2 protein (PubMed:36876523). Acts as a negative regulator of the G2/M checkpoint pathway, by preventing serine/threonine kinase WEE1 degradation, thereby repressing entry into mitosis following activation of the G2/M DNA damage

checkpoint (PubMed:20930503).

Cellular Location

Cytoplasm. Cytoplasm, cytoskeleton, microtubule organizing center, centrosome. Nucleus
Note=Accumulates in the nucleus following DNA injury

Tissue Location

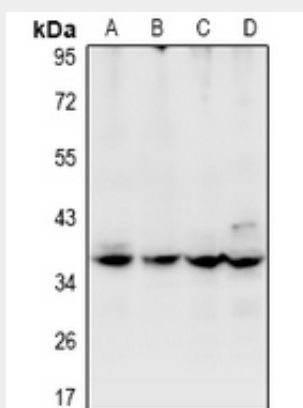
Weakly expressed in a few tissues.

Anti-USP50 Antibody - Protocols

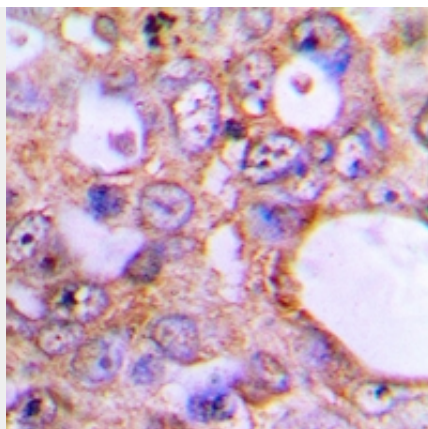
Provided below are standard protocols that you may find useful for product applications.

- [Western Blot](#)
- [Blocking Peptides](#)
- [Dot Blot](#)
- [Immunohistochemistry](#)
- [Immunofluorescence](#)
- [Immunoprecipitation](#)
- [Flow Cytometry](#)
- [Cell Culture](#)

Anti-USP50 Antibody - Images



Western blot analysis of USP50 expression in MCF7 (A), Hela (B), PC12 (C), CT26 (D) whole cell lysates.



Immunohistochemical analysis of USP50 staining in human lung cancer formalin fixed paraffin embedded tissue section. The section was pre-treated using heat mediated antigen retrieval with sodium citrate buffer (pH 6.0). The section was then incubated with the antibody at room temperature and detected using an HRP conjugated compact polymer system. DAB was used as the chromogen. The section was then counterstained with haematoxylin and mounted with DPX.

Anti-USP50 Antibody - Background

KLH-conjugated synthetic peptide encompassing a sequence within the C-term region of human USP50. The exact sequence is proprietary.