

Anti-LRP10 Antibody
Rabbit polyclonal antibody to LRP10
Catalog # AP60968**Specification**

Anti-LRP10 Antibody - Product Information

Application	WB, IHC
Primary Accession	Q7Z4F1
Other Accession	Q7TQH7
Reactivity	Human, Mouse, Rat
Host	Rabbit
Clonality	Polyclonal
Calculated MW	76193

Anti-LRP10 Antibody - Additional Information**Gene ID** 26020**Other Names**

Low-density lipoprotein receptor-related protein 10; LRP-10

Target/Specificity

KLH-conjugated synthetic peptide encompassing a sequence within the center region of human LRP10. The exact sequence is proprietary.

Dilution

WB~~WB (1/500 - 1/1000), IH (1/50 - 1/100)

IHC~~1:100~500

Format

Liquid in 0.42% Potassium phosphate, 0.87% Sodium chloride, pH 7.3, 30% glycerol, and 0.09% (W/V) sodium azide.

Storage

Store at -20 °C.Stable for 12 months from date of receipt

Anti-LRP10 Antibody - Protein Information**Name** LRP10**Function**

Probable receptor, which is involved in the internalization of lipophilic molecules and/or signal transduction. May be involved in the uptake of lipoprotein APOE in liver (By similarity).

Cellular Location

Membrane; Single-pass type I membrane protein. Membrane, coated pit

Tissue Location

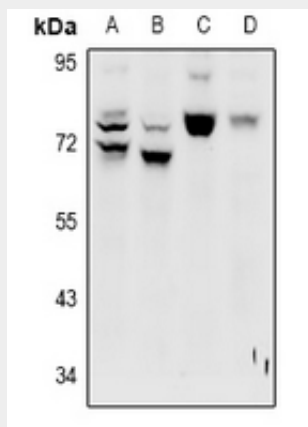
Expressed in blood leukocyte, lung, placenta, small intestine, liver, kidney, spleen, thymus, colon, skeletal muscle and heart.

Anti-LRP10 Antibody - Protocols

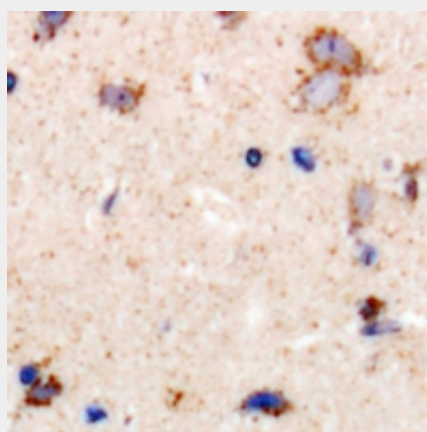
Provided below are standard protocols that you may find useful for product applications.

- [Western Blot](#)
- [Blocking Peptides](#)
- [Dot Blot](#)
- [Immunohistochemistry](#)
- [Immunofluorescence](#)
- [Immunoprecipitation](#)
- [Flow Cytometry](#)
- [Cell Culture](#)

Anti-LRP10 Antibody - Images



Western blot analysis of LRP10 expression in HepG2 (A), A549 (B), PC12 (C), CT26 (D) whole cell lysates.



Immunohistochemical analysis of LRP10 staining in human brain formalin fixed paraffin embedded tissue section. The section was pre-treated using heat mediated antigen retrieval with sodium citrate buffer (pH 6.0). The section was then incubated with the antibody at room temperature and detected using an HRP conjugated compact polymer system. DAB was used as the chromogen. The section was then counterstained with haematoxylin and mounted with DPX.

Anti-LRP10 Antibody - Background

KLH-conjugated synthetic peptide encompassing a sequence within the center region of human LRP10. The exact sequence is proprietary.