

Anti-NARFL Antibody
Rabbit polyclonal antibody to NARFL
Catalog # AP60970**Specification**

Anti-NARFL Antibody - Product Information

Application	WB, IHC
Primary Accession	O9H6Q4
Reactivity	Human
Host	Rabbit
Clonality	Polyclonal
Calculated MW	53020

Anti-NARFL Antibody - Additional Information**Gene ID** 64428**Other Names**

PRN; Cytosolic Fe-S cluster assembly factor NARFL; Iron-only hydrogenase-like protein 1; IOP1; Nuclear prelamins A recognition factor-like protein; Protein related to Narf

Target/Specificity

Recognizes endogenous levels of NARFL protein.

Dilution

WB~~WB (1/500 - 1/1000), IH (1/50 - 1/100)
IHC~~1:100~500

Format

Liquid in 0.42% Potassium phosphate, 0.87% Sodium chloride, pH 7.3, 30% glycerol, and 0.09% (W/V) sodium azide.

Storage

Store at -20 °C. Stable for 12 months from date of receipt

Anti-NARFL Antibody - Protein Information**Name** CIAO3 ([HGNC:14179](#))**Function**

Component of the cytosolic iron-sulfur protein assembly (CIA) complex, a multiprotein complex that mediates the incorporation of iron-sulfur cluster into extramitochondrial Fe/S proteins. Seems to negatively regulate the level of HIF1A expression, although this effect could be indirect.

Tissue Location

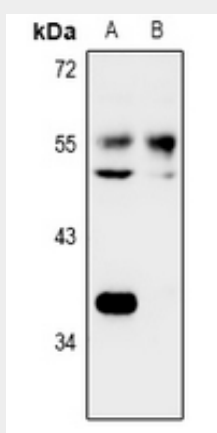
Widely expressed..

Anti-NARFL Antibody - Protocols

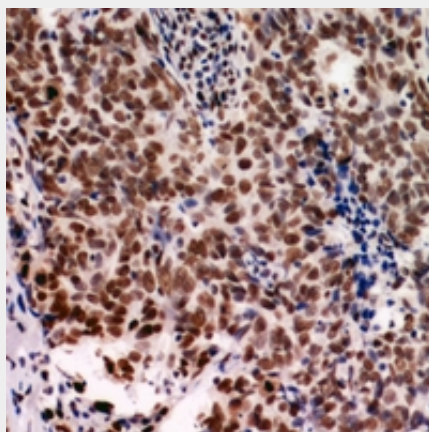
Provided below are standard protocols that you may find useful for product applications.

- [Western Blot](#)
- [Blocking Peptides](#)
- [Dot Blot](#)
- [Immunohistochemistry](#)
- [Immunofluorescence](#)
- [Immunoprecipitation](#)
- [Flow Cytometry](#)
- [Cell Culture](#)

Anti-NARFL Antibody - Images



Western blot analysis of NARFL expression in MCF7 (A), H1792 (B) whole cell lysates.



Immunohistochemical analysis of NARFL staining in human breast cancer formalin fixed paraffin embedded tissue section. The section was pre-treated using heat mediated antigen retrieval with sodium citrate buffer (pH 6.0). The section was then incubated with the antibody at room temperature and detected using an HRP conjugated compact polymer system. DAB was used as the chromogen. The section was then counterstained with haematoxylin and mounted with DPX.

Anti-NARFL Antibody - Background

KLH-conjugated synthetic peptide encompassing a sequence within the C-term region of human NARFL. The exact sequence is proprietary.