

Anti-OXR1 Antibody
Rabbit polyclonal antibody to OXR1
Catalog # AP60972**Specification**

Anti-OXR1 Antibody - Product Information

Application	WB, IH
Primary Accession	Q8N573
Other Accession	Q4KMM3
Reactivity	Human, Mouse, Rat
Host	Rabbit
Clonality	Polyclonal
Calculated MW	97970

Anti-OXR1 Antibody - Additional Information**Gene ID** 55074**Other Names**

Oxidation resistance protein 1

Target/Specificity

Recognizes endogenous levels of OXR1 protein.

Dilution

WB~~WB (1/500 - 1/1000), IH (1/50 - 1/100)

IH~~WB (1/500 - 1/1000), IH (1/50 - 1/100)

Format

Liquid in 0.42% Potassium phosphate, 0.87% Sodium chloride, pH 7.3, 30% glycerol, and 0.09% (W/V) sodium azide.

Storage

Store at -20 °C. Stable for 12 months from date of receipt

Anti-OXR1 Antibody - Protein Information**Name** OXR1**Function**

May be involved in protection from oxidative damage.

Cellular Location

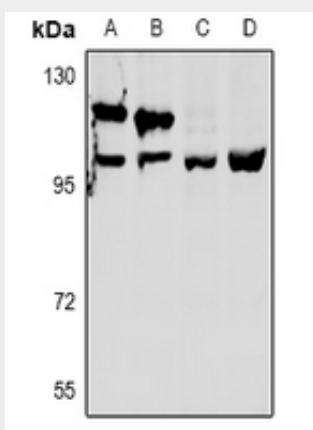
Mitochondrion.

Anti-OXR1 Antibody - Protocols

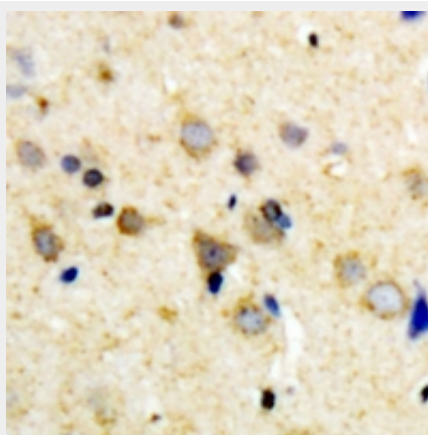
Provided below are standard protocols that you may find useful for product applications.

- [Western Blot](#)
- [Blocking Peptides](#)
- [Dot Blot](#)
- [Immunohistochemistry](#)
- [Immunofluorescence](#)
- [Immunoprecipitation](#)
- [Flow Cytometry](#)
- [Cell Culture](#)

Anti-OXR1 Antibody - Images



Western blot analysis of OXR1 expression in PC12 (A), AML12 (B), LO2 (C), SGC7901 (D) whole cell lysates.



Immunohistochemical analysis of OXR1 staining in human brain formalin fixed paraffin embedded tissue section. The section was pre-treated using heat mediated antigen retrieval with sodium citrate buffer (pH 6.0). The section was then incubated with the antibody at room temperature and detected using an HRP conjugated compact polymer system. DAB was used as the chromogen. The section was then counterstained with haematoxylin and mounted with DPX.

Anti-OXR1 Antibody - Background

KLH-conjugated synthetic peptide encompassing a sequence within the center region of human OXR1. The exact sequence is proprietary.