

Anti-ZDHHC15 Antibody
Rabbit polyclonal antibody to ZDHHC15
Catalog # AP60973**Specification**

Anti-ZDHHC15 Antibody - Product Information

Application	WB
Primary Accession	O96MV8
Other Accession	Q8BGJ0
Reactivity	Human, Mouse, Rat
Host	Rabbit
Clonality	Polyclonal
Calculated MW	39331

Anti-ZDHHC15 Antibody - Additional Information**Gene ID** 158866**Other Names**

Palmitoyltransferase ZDHHC15; Zinc finger DHHC domain-containing protein 15; DHHC-15

Target/Specificity

Recognizes endogenous levels of ZDHHC15 protein.

Dilution

WB~~WB (1/500 - 1/1000)

Format

Liquid in 0.42% Potassium phosphate, 0.87% Sodium chloride, pH 7.3, 30% glycerol, and 0.09% (W/V) sodium azide.

Storage

Store at -20 °C. Stable for 12 months from date of receipt

Anti-ZDHHC15 Antibody - Protein Information**Name** ZDHHC15 ([HGNC:20342](#))**Function**

Palmitoyltransferase that catalyzes the addition of palmitate onto various protein substrates (PubMed:18817523, PubMed:23034182). Has no stringent fatty acid selectivity and in addition to palmitate can also transfer onto target proteins myristate from tetradecanoyl-CoA and stearate from octadecanoyl-CoA (By similarity). Palmitoylates IGF2R and SORT1, promoting their partitioning to an endosomal membrane subdomain where they can interact with the retromer cargo-selective complex (PubMed:18817523). Thereby, regulates retrograde transport from endosomes to the Golgi apparatus of these lysosomal sorting

receptors and plays a role in trafficking of lysosomal proteins (PubMed:18817523). In the nervous system, catalyzes the palmitoylation of DLG4/PSD95 and regulates its synaptic clustering and function in synaptogenesis (By similarity). Could be involved in the differentiation of dopaminergic neurons and the development of the diencephalon (By similarity). Could also catalyze the palmitoylation of GAP43 (By similarity). Could also palmitoylate DNAJC5 and regulate its localization to the Golgi membrane (By similarity). Could also palmitoylate FYN as shown in vitro (PubMed:19956733). May palmitoylate CALHM3 subunit of gustatory voltage-gated ion channels and modulate channel gating and kinetics.

Cellular Location

Golgi apparatus membrane; Multi-pass membrane protein {ECO:0000250|UniProtKB:F1QXD3}. Postsynaptic density {ECO:0000250|UniProtKB:Q2TGJ4}

Tissue Location

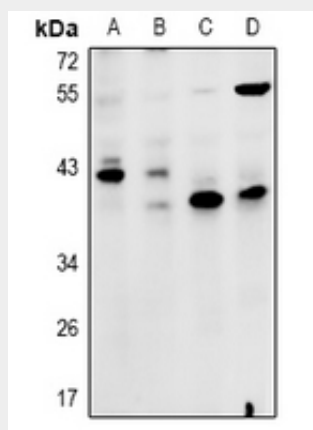
Expressed in placenta, liver, lung, kidney, heart and brain.

Anti-ZDHHC15 Antibody - Protocols

Provided below are standard protocols that you may find useful for product applications.

- [Western Blot](#)
- [Blocking Peptides](#)
- [Dot Blot](#)
- [Immunohistochemistry](#)
- [Immunofluorescence](#)
- [Immunoprecipitation](#)
- [Flow Cytometry](#)
- [Cell Culture](#)

Anti-ZDHHC15 Antibody - Images



Western blot analysis of ZDHHC15 expression in HEK293T (A), HepG2 (B), AML12 (C), C6 (D) whole cell lysates.

Anti-ZDHHC15 Antibody - Background

KLH-conjugated synthetic peptide encompassing a sequence within the C-term region of human ZDHHC15. The exact sequence is proprietary.