

**Anti-PI3K p101 Antibody**  
**Rabbit polyclonal antibody to PI3K p101**  
**Catalog # AP60974****Specification**

---

**Anti-PI3K p101 Antibody - Product Information**

Application	WB, IHC
Primary Accession	<a href="#">Q8WYR1</a>
Other Accession	<a href="#">Q5SW28</a>
Reactivity	Human, Mouse, Rat, Pig, Chicken
Host	Rabbit
Clonality	Polyclonal
Calculated MW	97348

**Anti-PI3K p101 Antibody - Additional Information****Gene ID** 23533**Other Names**

Phosphoinositide 3-kinase regulatory subunit 5; PI3-kinase regulatory subunit 5; PI3-kinase p101 subunit; Phosphatidylinositol 45-bisphosphate 3-kinase regulatory subunit; PtdIns-3-kinase regulatory subunit; Protein FOAP-2; PtdIns-3-kinase p101; p101-PI3K

**Target/Specificity**

KLH-conjugated synthetic peptide encompassing a sequence within the C-term region of human PI3K p101. The exact sequence is proprietary.

**Dilution**

WB~~WB (1/500 - 1/1000), IH (1/50 - 1/100)  
IHC~~1:100~500

**Format**

Liquid in 0.42% Potassium phosphate, 0.87% Sodium chloride, pH 7.3, 30% glycerol, and 0.09% (W/V) sodium azide.

**Storage**

Store at -20 °C. Stable for 12 months from date of receipt

**Anti-PI3K p101 Antibody - Protein Information****Name** PIK3R5**Function**

Regulatory subunit of the PI3K gamma complex. Required for recruitment of the catalytic subunit to the plasma membrane via interaction with beta-gamma G protein dimers. Required for G protein- mediated activation of PIK3CG (By similarity).

**Cellular Location**

Nucleus {ECO:0000250|UniProtKB:O02696}. Cytoplasm {ECO:0000250|UniProtKB:O02696}. Cell membrane {ECO:0000250|UniProtKB:O02696}; Peripheral membrane protein {ECO:0000250|UniProtKB:O02696}. Note=Predominantly localized in the nucleus in absence of PIK3CG/p120. Colocalizes with PIK3CG/p120 in the cytoplasm. Translocated to the plasma membrane in a beta-gamma G protein-dependent manner. {ECO:0000250|UniProtKB:O02696}

#### **Tissue Location**

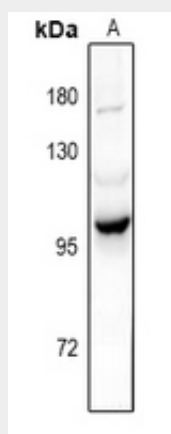
Ubiquitously expressed with high expression in fetal brain compared to adult brain. Abundant expression is observed in cerebellum, cerebral cortex, cerebral meninges, and vermis cerebelli

#### **Anti-PI3K p101 Antibody - Protocols**

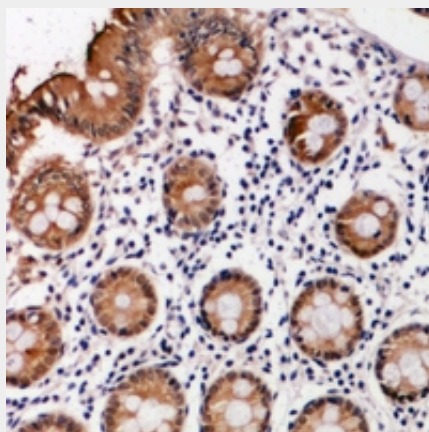
Provided below are standard protocols that you may find useful for product applications.

- [Western Blot](#)
- [Blocking Peptides](#)
- [Dot Blot](#)
- [Immunohistochemistry](#)
- [Immunofluorescence](#)
- [Immunoprecipitation](#)
- [Flow Cytometry](#)
- [Cell Culture](#)

#### **Anti-PI3K p101 Antibody - Images**



Western blot analysis of PI3K p101 expression in rat brain (A) whole cell lysates.



Immunohistochemical analysis of PI3K p101 staining in human colon cancer formalin fixed paraffin embedded tissue section. The section was pre-treated using heat mediated antigen retrieval with sodium citrate buffer (pH 6.0). The section was then incubated with the antibody at room temperature and detected using an HRP conjugated compact polymer system. DAB was used as the chromogen. The section was then counterstained with haematoxylin and mounted with DPX.

**Anti-PI3K p101 Antibody - Background**

KLH-conjugated synthetic peptide encompassing a sequence within the C-term region of human PI3K p101. The exact sequence is proprietary.