

Anti-p46 Antibody
Rabbit polyclonal antibody to p46
Catalog # AP60976**Specification**

Anti-p46 Antibody - Product Information

Application	WB, IHC
Primary Accession	Q9BY77
Other Accession	Q8BG81
Reactivity	Human, Mouse, Rat
Host	Rabbit
Clonality	Polyclonal
Calculated MW	46089

Anti-p46 Antibody - Additional Information**Gene ID** 84271**Other Names**

KIAA1649; PDIP46; Polymerase delta-interacting protein 3; 46 kDa DNA polymerase delta interaction protein; p46; S6K1 Aly/REF-like target; SKAR

Target/Specificity

Recognizes endogenous levels of p46 protein.

DilutionWB~~WB (1/500 - 1/1000), IH (1/50 - 1/100)
IHC~~1:100~500**Format**

Liquid in 0.42% Potassium phosphate, 0.87% Sodium chloride, pH 7.3, 30% glycerol, and 0.09% (W/V) sodium azide.

Storage

Store at -20 °C. Stable for 12 months from date of receipt

Anti-p46 Antibody - Protein Information**Name** POLDIP3**Synonyms** KIAA1649, PDIP46**Function**

Is involved in regulation of translation. Is preferentially associated with CBC-bound spliced mRNA-protein complexes during the pioneer round of mRNA translation. Contributes to enhanced translational efficiency of spliced over nonspliced mRNAs. Recruits activated ribosomal protein S6 kinase beta-1 I/RPS6KB1 to newly synthesized mRNA. Involved in nuclear mRNA export; probably mediated by association with the TREX complex.

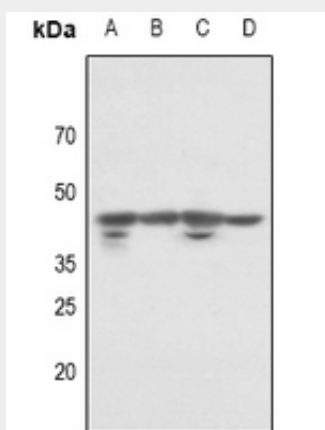
Cellular Location

Nucleus. Nucleus speckle. Cytoplasm. Note=Nucleocytoplasmic shuttling protein

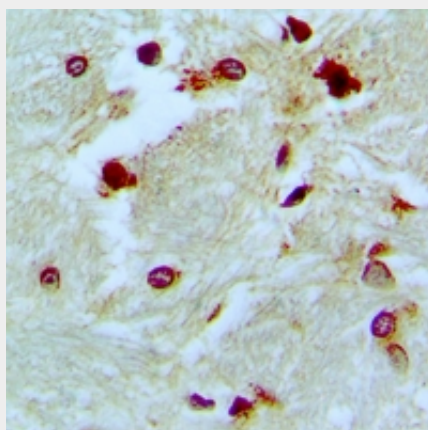
Anti-p46 Antibody - Protocols

Provided below are standard protocols that you may find useful for product applications.

- [Western Blot](#)
- [Blocking Peptides](#)
- [Dot Blot](#)
- [Immunohistochemistry](#)
- [Immunofluorescence](#)
- [Immunoprecipitation](#)
- [Flow Cytometry](#)
- [Cell Culture](#)

Anti-p46 Antibody - Images

Western blot analysis of p46 expression in PC12 (A), CT26 (B), HeLa (C), MCF7 (D) whole cell lysates.



Immunohistochemical analysis of p46 staining in human brain formalin fixed paraffin embedded tissue section. The section was pre-treated using heat mediated antigen retrieval with sodium citrate buffer (pH 6.0). The section was then incubated with the antibody at room temperature and detected using an HRP conjugated compact polymer system. DAB was used as the chromogen. The section was then counterstained with haematoxylin and mounted with DPX.

Anti-p46 Antibody - Background

KLH-conjugated synthetic peptide encompassing a sequence within the C-term region of human p46. The exact sequence is proprietary.