

Anti-KCNT1 Antibody
Rabbit polyclonal antibody to KCNT1
Catalog # AP60978**Specification**

Anti-KCNT1 Antibody - Product Information

Application	WB, IH
Primary Accession	Q5JUK3
Other Accession	Q6ZPR4
Reactivity	Human, Mouse, Rat
Host	Rabbit
Clonality	Polyclonal
Calculated MW	138343

Anti-KCNT1 Antibody - Additional Information**Gene ID** 57582**Other Names**

KIAA1422; Potassium channel subfamily T member 1; KCa4.1

Target/Specificity

Recognizes endogenous levels of KCNT1 protein.

Dilution

WB~~WB (1/500 - 1/1000), IH (1/50 - 1/100)

IH~~WB (1/500 - 1/1000), IH (1/50 - 1/100)

Format

Liquid in 0.42% Potassium phosphate, 0.87% Sodium chloride, pH 7.3, 30% glycerol, and 0.09% (W/V) sodium azide.

Storage

Store at -20 °C. Stable for 12 months from date of receipt

Anti-KCNT1 Antibody - Protein Information**Name** KCNT1**Synonyms** KIAA1422**Function**

Outwardly rectifying potassium channel subunit that may coassemble with other Slo-type channel subunits. Activated by high intracellular sodium or chloride levels. Activated upon stimulation of G-protein coupled receptors, such as CHRM1 and GRIA1. May be regulated by calcium in the absence of sodium ions (in vitro) (By similarity).

Cellular Location

Cell membrane; Multi-pass membrane protein

Tissue Location

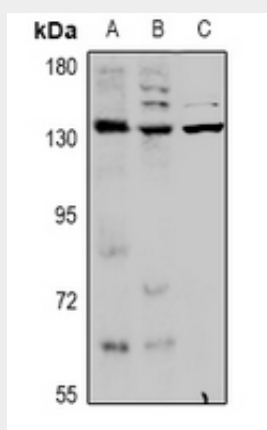
Highest expression in liver, brain and spinal cord. Lowest expression in skeletal muscle.

Anti-KCNT1 Antibody - Protocols

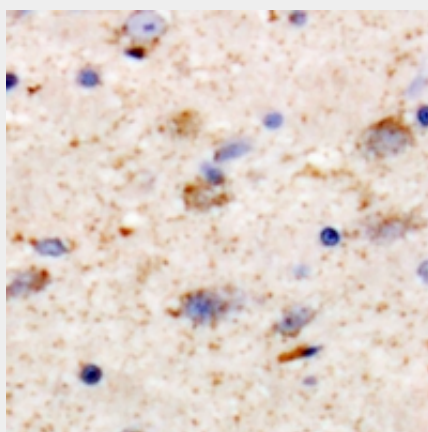
Provided below are standard protocols that you may find useful for product applications.

- [Western Blot](#)
- [Blocking Peptides](#)
- [Dot Blot](#)
- [Immunohistochemistry](#)
- [Immunofluorescence](#)
- [Immunoprecipitation](#)
- [Flow Cytometry](#)
- [Cell Culture](#)

Anti-KCNT1 Antibody - Images



Western blot analysis of KCNT1 expression in HepG2 (A), AML12 (B), C6 (C) whole cell lysates.



Immunohistochemical analysis of KCNT1 staining in human brain formalin fixed paraffin embedded tissue section. The section was pre-treated using heat mediated antigen retrieval with sodium citrate buffer (pH 6.0). The section was then incubated with the antibody at room temperature and detected using an HRP conjugated compact polymer system. DAB was used as

the chromogen. The section was then counterstained with haematoxylin and mounted with DPX.

Anti-KCNT1 Antibody - Background

KLH-conjugated synthetic peptide encompassing a sequence within the C-term region of human KCNT1. The exact sequence is proprietary.