

**Anti-Kv5.1 Antibody**  
**Rabbit polyclonal antibody to Kv5.1**  
**Catalog # AP60979****Specification**

---

**Anti-Kv5.1 Antibody - Product Information**

Application	WB
Primary Accession	<a href="#">Q9H3M0</a>
Other Accession	<a href="#">Q7TSH7</a>
Reactivity	Human, Mouse, Rat, Monkey
Host	Rabbit
Clonality	Polyclonal
Calculated MW	55584

**Anti-Kv5.1 Antibody - Additional Information****Gene ID** 3754**Other Names**

Potassium voltage-gated channel subfamily F member 1; Voltage-gated potassium channel subunit Kv5.1; KH1

**Target/Specificity**

Recognizes endogenous levels of Kv5.1 protein.

**Dilution**

WB~~WB (1/500 - 1/1000)

**Format**

Liquid in 0.42% Potassium phosphate, 0.87% Sodium chloride, pH 7.3, 30% glycerol, and 0.09% (W/V) sodium azide.

**Storage**

Store at -20 °C. Stable for 12 months from date of receipt

**Anti-Kv5.1 Antibody - Protein Information****Name** KCNF1 ([HGNC:6246](#))**Function**

Regulatory alpha-subunit of the voltage-gated potassium (Kv) channel which, when coassembled with KCNB1 or KCNB2, can modulate their expression and their gating kinetics by acting on deactivation upon repolarization and inactivation during maintained depolarization. Accelerates inactivation but has relatively little effect on deactivation. Coexpression with KCNB1 or KCNB2 markedly slows inactivation. Each modulatory subunit has its own specific properties of regulation, and can lead to extensive inhibitions, to large changes in kinetics, and/or to large shifts in the voltage dependencies of the inactivation process. The gating kinetics depends on the nature and stoichiometry of the associated regulatory subunit. Fails to produce a potassium current when

expressed alone.

**Cellular Location**

Cell membrane {ECO:0000250|UniProtKB:Q14721}; Multi-pass membrane protein

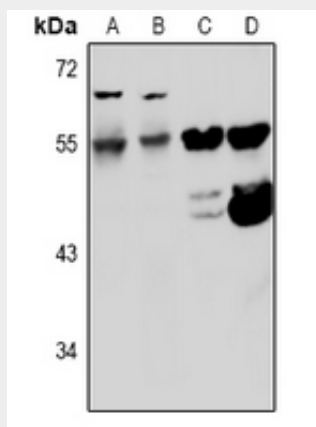
**Tissue Location**

Detected in heart, brain, liver, skeletal muscle, kidney and pancreas

**Anti-Kv5.1 Antibody - Protocols**

Provided below are standard protocols that you may find useful for product applications.

- [Western Blot](#)
- [Blocking Peptides](#)
- [Dot Blot](#)
- [Immunohistochemistry](#)
- [Immunofluorescence](#)
- [Immunoprecipitation](#)
- [Flow Cytometry](#)
- [Cell Culture](#)

**Anti-Kv5.1 Antibody - Images**

Western blot analysis of Kv5.1 expression in COS7 (A), Panc1 (B), mouse heart (C), rat heart (D) whole cell lysates.

**Anti-Kv5.1 Antibody - Background**

KLH-conjugated synthetic peptide encompassing a sequence within the center region of human Kv5.1. The exact sequence is proprietary.