

Anti-Gemin3 Antibody
Rabbit polyclonal antibody to Gemin3
Catalog # AP60980

Specification

Anti-Gemin3 Antibody - Product Information

Application	WB
Primary Accession	O9UHI6
Other Accession	O9JY4
Reactivity	Human, Mouse, Rat
Host	Rabbit
Clonality	Polyclonal
Calculated MW	92241

Anti-Gemin3 Antibody - Additional Information

Gene ID 11218

Other Names

DP103; GEMIN3; Probable ATP-dependent RNA helicase DDX20; Component of gems 3; DEAD box protein 20; DEAD box protein DP 103; Gemin-3

Target/Specificity

Recognizes endogenous levels of Gemin3 protein.

Dilution

WB~~WB (1/500 - 1/1000)

Format

Liquid in 0.42% Potassium phosphate, 0.87% Sodium chloride, pH 7.3, 30% glycerol, and 0.09% (W/V) sodium azide.

Storage

Store at -20 °C. Stable for 12 months from date of receipt

Anti-Gemin3 Antibody - Protein Information

Name DDX20

Synonyms DP103, GEMIN3

Function

The SMN complex catalyzes the assembly of small nuclear ribonucleoproteins (snRNPs), the building blocks of the spliceosome, and thereby plays an important role in the splicing of cellular pre- mRNAs. Most spliceosomal snRNPs contain a common set of Sm proteins SNRPB, SNRPD1, SNRPD2, SNRPD3, SNRPE, SNRPF and SNRPG that assemble in a heptameric protein ring on the Sm site of the small nuclear RNA to form the core snRNP (Sm core). In the cytosol, the Sm proteins SNRPD1, SNRPD2, SNRPE, SNRPF and SNRPG are trapped in an inactive 6S pICln-Sm complex by

the chaperone CLNS1A that controls the assembly of the core snRNP. To assemble core snRNPs, the SMN complex accepts the trapped 5Sm proteins from CLNS1A forming an intermediate. Binding of snRNA inside 5Sm triggers eviction of the SMN complex, thereby allowing binding of SNRPD3 and SNRPB to complete assembly of the core snRNP. May also play a role in the metabolism of small nucleolar ribonucleoprotein (snoRNPs).

Cellular Location

Cytoplasm. Nucleus, gem Note=Localized in subnuclear structures next to coiled bodies, called Gemini or Cajal bodies (Gems).

Tissue Location

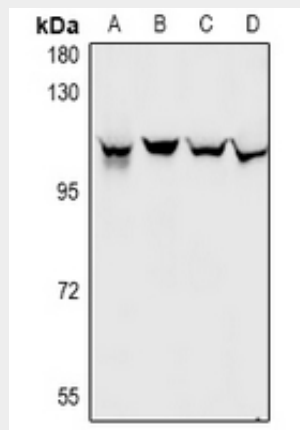
Ubiquitous.

Anti-Gemin3 Antibody - Protocols

Provided below are standard protocols that you may find useful for product applications.

- [Western Blot](#)
- [Blocking Peptides](#)
- [Dot Blot](#)
- [Immunohistochemistry](#)
- [Immunofluorescence](#)
- [Immunoprecipitation](#)
- [Flow Cytometry](#)
- [Cell Culture](#)

Anti-Gemin3 Antibody - Images



Western blot analysis of Gemin3 expression in A549 (A), HCC827 (B), H9C2 (C), CT26 (D) whole cell lysates.

Anti-Gemin3 Antibody - Background

KLH-conjugated synthetic peptide encompassing a sequence within the center region of human Gemin3. The exact sequence is proprietary.