

**Anti-PPM1L Antibody**  
**Rabbit polyclonal antibody to PPM1L**  
**Catalog # AP60982****Specification**

---

**Anti-PPM1L Antibody - Product Information**

Application	WB
Primary Accession	<a href="#">Q5SGD2</a>
Other Accession	<a href="#">Q8BHN0</a>
Reactivity	Human, Mouse, Monkey
Host	Rabbit
Clonality	Polyclonal
Calculated MW	41053

**Anti-PPM1L Antibody - Additional Information****Gene ID** 151742**Other Names**

PP2CE; Protein phosphatase 1L; Protein phosphatase 1-like; Protein phosphatase 2C isoform epsilon; PP2C-epsilon

**Target/Specificity**

KLH-conjugated synthetic peptide encompassing a sequence within the center region of human PPM1L. The exact sequence is proprietary.

**Dilution**

WB~~WB (1/500 - 1/1000)

**Format**

Liquid in 0.42% Potassium phosphate, 0.87% Sodium chloride, pH 7.3, 30% glycerol, and 0.09% (W/V) sodium azide.

**Storage**

Store at -20 °C. Stable for 12 months from date of receipt

**Anti-PPM1L Antibody - Protein Information****Name** PPM1L**Synonyms** PP2CE**Function**

Acts as a suppressor of the SAPK signaling pathways by associating with and dephosphorylating MAP3K7/TAK1 and MAP3K5, and by attenuating the association between MAP3K7/TAK1 and MAP2K4 or MAP2K6.

**Cellular Location**

Membrane; Single-pass type I membrane protein

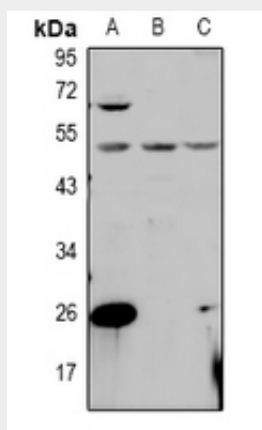
**Tissue Location**

Ubiquitous. Highly expressed in heart, placenta, lung, liver, kidney and pancreas.

**Anti-PPM1L Antibody - Protocols**

Provided below are standard protocols that you may find useful for product applications.

- [Western Blot](#)
- [Blocking Peptides](#)
- [Dot Blot](#)
- [Immunohistochemistry](#)
- [Immunofluorescence](#)
- [Immunoprecipitation](#)
- [Flow Cytometry](#)
- [Cell Culture](#)

**Anti-PPM1L Antibody - Images**

Western blot analysis of PPM1L expression in AML12 (A), H1792 (B), COS7 (C) whole cell lysates.

**Anti-PPM1L Antibody - Background**

KLH-conjugated synthetic peptide encompassing a sequence within the center region of human PPM1L. The exact sequence is proprietary.