

**Anti-ARHGEF19 Antibody**  
**Rabbit polyclonal antibody to ARHGEF19**  
**Catalog # AP60991****Specification**

---

**Anti-ARHGEF19 Antibody - Product Information**

Application	WB
Primary Accession	<a href="#">Q8IW93</a>
Other Accession	<a href="#">Q8BWA8</a>
Reactivity	Human, Mouse, Rat
Host	Rabbit
Clonality	Polyclonal
Calculated MW	89197

**Anti-ARHGEF19 Antibody - Additional Information****Gene ID** 128272**Other Names**

Rho guanine nucleotide exchange factor 19; Ephexin-2

**Target/Specificity**

Recognizes endogenous levels of ARHGEF19 protein.

**Dilution**

WB~~WB (1/500 - 1/1000), IH (1/50 - 1/100)

**Format**

Liquid in 0.42% Potassium phosphate, 0.87% Sodium chloride, pH 7.3, 30% glycerol, and 0.09% (W/V) sodium azide.

**Storage**

Store at -20 °C. Stable for 12 months from date of receipt

**Anti-ARHGEF19 Antibody - Protein Information****Name** ARHGEF19**Function**

Acts as a guanine nucleotide exchange factor (GEF) for RhoA GTPase.

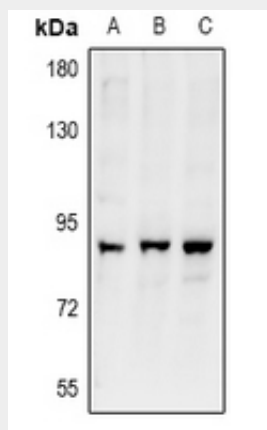
**Anti-ARHGEF19 Antibody - Protocols**

Provided below are standard protocols that you may find useful for product applications.

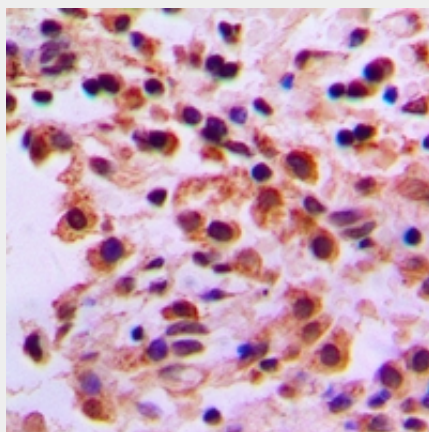
- [Western Blot](#)

- [Blocking Peptides](#)
- [Dot Blot](#)
- [Immunohistochemistry](#)
- [Immunofluorescence](#)
- [Immunoprecipitation](#)
- [Flow Cytometry](#)
- [Cell Culture](#)

#### Anti-ARHGEF19 Antibody - Images



Western blot analysis of ARHGEF19 expression in CT26 (A), PC12 (B), HeLa (C) whole cell lysates.



Immunohistochemical analysis of ARHGEF19 staining in human lung cancer formalin fixed paraffin embedded tissue section. The section was pre-treated using heat mediated antigen retrieval with sodium citrate buffer (pH 6.0). The section was then incubated with the antibody at room temperature and detected using an HRP conjugated compact polymer system. DAB was used as the chromogen. The section was then counterstained with haematoxylin and mounted with DPX.

#### Anti-ARHGEF19 Antibody - Background

KLH-conjugated synthetic peptide encompassing a sequence within the center region of human ARHGEF19. The exact sequence is proprietary.