

**Anti-RCL1 Antibody**  
**Rabbit polyclonal antibody to RCL1**  
**Catalog # AP60992****Specification**

---

**Anti-RCL1 Antibody - Product Information**

Application	WB
Primary Accession	<a href="#">O9Y2P8</a>
Other Accession	<a href="#">O9JIT0</a>
Reactivity	Human, Mouse, Monkey, Bovine
Host	Rabbit
Clonality	Polyclonal
Calculated MW	40843

**Anti-RCL1 Antibody - Additional Information****Gene ID** 10171**Other Names**

RNAC; RPC2; RPCL1; RTC2; RNA 3'-terminal phosphate cyclase-like protein

**Target/Specificity**

Recognizes endogenous levels of RCL1 protein.

**Dilution**

WB~~WB (1/500 - 1/1000)

**Format**

Liquid in 0.42% Potassium phosphate, 0.87% Sodium chloride, pH 7.3, 30% glycerol, and 0.09% (W/V) sodium azide.

**Storage**

Store at -20 °C. Stable for 12 months from date of receipt

**Anti-RCL1 Antibody - Protein Information****Name** RCL1 ([HGNC:17687](#))**Synonyms** RNAC, RPC2, RPCL1, RTC2**Function**

Part of the small subunit (SSU) processome, first precursor of the small eukaryotic ribosomal subunit. During the assembly of the SSU processome in the nucleolus, many ribosome biogenesis factors, an RNA chaperone and ribosomal proteins associate with the nascent pre- rRNA and work in concert to generate RNA folding, modifications, rearrangements and cleavage as well as targeted degradation of pre- ribosomal RNA by the RNA exosome (PubMed:<a href="http://www.uniprot.org/citations/34516797" target="\_blank">34516797</a>). Does not have cyclase activity (By similarity).

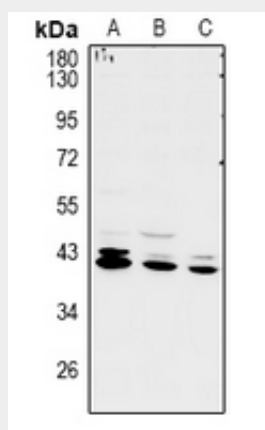
**Cellular Location**

Nucleus, nucleolus.

**Anti-RCL1 Antibody - Protocols**

Provided below are standard protocols that you may find useful for product applications.

- [Western Blot](#)
- [Blocking Peptides](#)
- [Dot Blot](#)
- [Immunohistochemistry](#)
- [Immunofluorescence](#)
- [Immunoprecipitation](#)
- [Flow Cytometry](#)
- [Cell Culture](#)

**Anti-RCL1 Antibody - Images**

Western blot analysis of RCL1 expression in LO2 (A), A549 (B), COS7 (C) whole cell lysates.

**Anti-RCL1 Antibody - Background**

KLH-conjugated synthetic peptide encompassing a sequence within the C-term region of human RCL1. The exact sequence is proprietary.