

Anti-PDIK1L Antibody
Rabbit polyclonal antibody to PDIK1L
Catalog # AP60996**Specification**

Anti-PDIK1L Antibody - Product Information

Application	WB, IHC
Primary Accession	Q8N165
Reactivity	Human, Monkey
Host	Rabbit
Clonality	Polyclonal
Calculated MW	38546

Anti-PDIK1L Antibody - Additional Information**Gene ID** 149420**Other Names**

CLIK1L; Serine/threonine-protein kinase PDIK1L; PDLIM1-interacting kinase 1-like

Target/Specificity

Recognizes endogenous levels of PDIK1L protein.

Dilution

WB~~WB (1/500 - 1/1000), IH (1/50 - 1/100)

IHC~~1:100~500

Format

Liquid in 0.42% Potassium phosphate, 0.87% Sodium chloride, pH 7.3, 30% glycerol, and 0.09% (W/V) sodium azide.

Storage

Store at -20 °C. Stable for 12 months from date of receipt

Anti-PDIK1L Antibody - Protein Information**Name** PDIK1L**Synonyms** CLIK1L**Cellular Location**

Nucleus.

Tissue Location

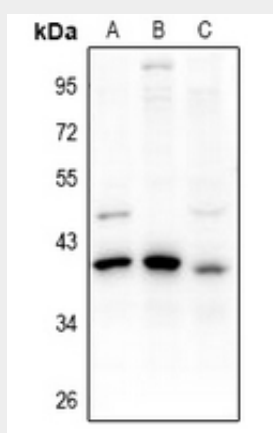
Expressed in liver, kidney, pancreas, spleen, thymus and prostate.

Anti-PDIK1L Antibody - Protocols

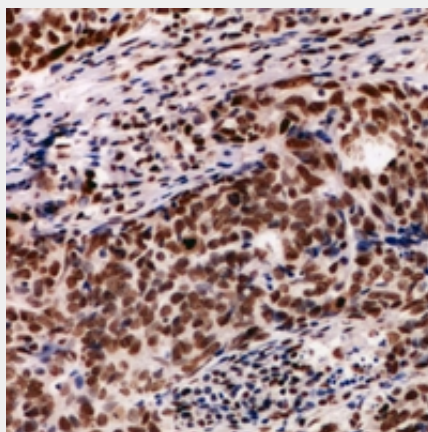
Provided below are standard protocols that you may find useful for product applications.

- [Western Blot](#)
- [Blocking Peptides](#)
- [Dot Blot](#)
- [Immunohistochemistry](#)
- [Immunofluorescence](#)
- [Immunoprecipitation](#)
- [Flow Cytometry](#)
- [Cell Culture](#)

Anti-PDIK1L Antibody - Images



Western blot analysis of PDIK1L expression in LO2 (A), HEK293T (B), COS7 (C) whole cell lysates.



Immunohistochemical analysis of PDIK1L staining in human breast cancer formalin fixed paraffin embedded tissue section. The section was pre-treated using heat mediated antigen retrieval with sodium citrate buffer (pH 6.0). The section was then incubated with the antibody at room temperature and detected using an HRP conjugated compact polymer system. DAB was used as the chromogen. The section was then counterstained with haematoxylin and mounted with DPX.

Anti-PDIK1L Antibody - Background

KLH-conjugated synthetic peptide encompassing a sequence within the center region of human PDIK1L. The exact sequence is proprietary.