

**Anti-TRF3 Antibody**  
**Rabbit polyclonal antibody to TRF3**  
**Catalog # AP61016****Specification**

---

**Anti-TRF3 Antibody - Product Information**

Application	WB, IHC
Primary Accession	<a href="#">Q6SJ96</a>
Other Accession	<a href="#">Q6SJ95</a>
Reactivity	Human, Mouse, Rat
Host	Rabbit
Clonality	Polyclonal
Calculated MW	38035

**Anti-TRF3 Antibody - Additional Information****Gene ID** 387332**Other Names**

TBP2; TRF3; TATA box-binding protein-like protein 2; TBP-like protein 2; TATA box-binding protein-related factor 3; TBP-related factor 3

**Target/Specificity**

Recognizes endogenous levels of TRF3 protein.

**Dilution**WB~~WB (1/500 - 1/1000), IH (1/50 - 1/100)  
IHC~~1:100~500**Format**

Liquid in 0.42% Potassium phosphate, 0.87% Sodium chloride, pH 7.3, 30% glycerol, and 0.09% (W/V) sodium azide.

**Storage**

Store at -20 °C.Stable for 12 months from date of receipt

**Anti-TRF3 Antibody - Protein Information****Name** TBPL2 {ECO:0000312|EMBL:AAI17186.1, ECO:0000312|HGNC:HGNC:19841}**Function**

Transcription factor required in complex with TAF3 for the differentiation of myoblasts into myocytes. The complex replaces TFIIID at specific promoters at an early stage in the differentiation process (By similarity).

**Cellular Location**

Cytoplasm. Nucleus. Note=Present in the cytoplasm during cytokinesis.

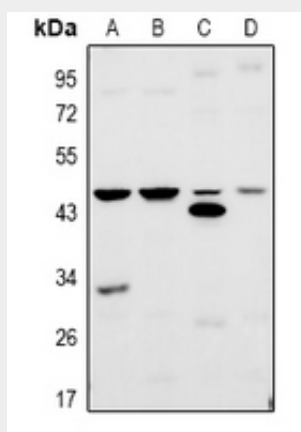
**Tissue Location**

Ubiquitously expressed in all tissues examined with highest levels in heart, lung, ovary, spleen and testes

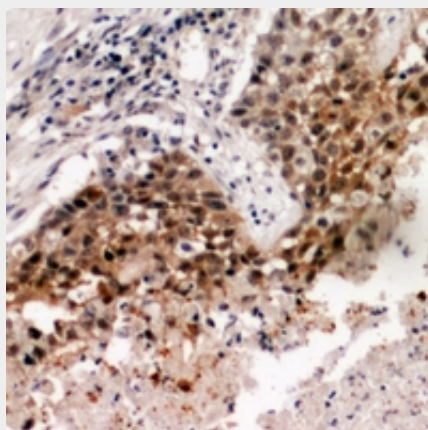
**Anti-TRF3 Antibody - Protocols**

Provided below are standard protocols that you may find useful for product applications.

- [Western Blot](#)
- [Blocking Peptides](#)
- [Dot Blot](#)
- [Immunohistochemistry](#)
- [Immunofluorescence](#)
- [Immunoprecipitation](#)
- [Flow Cytometry](#)
- [Cell Culture](#)

**Anti-TRF3 Antibody - Images**

Western blot analysis of TRF3 expression in A2780 (A), H1792 (B), mouse testis (C), rat testis (D) whole cell lysates.



Immunohistochemical analysis of TRF3 staining in human lung cancer formalin fixed paraffin embedded tissue section. The section was pre-treated using heat mediated antigen retrieval with sodium citrate buffer (pH 6.0). The section was then incubated with the antibody at room temperature and detected using an HRP conjugated compact polymer system. DAB was used as

the chromogen. The section was then counterstained with haematoxylin and mounted with DPX.

**Anti-TRF3 Antibody - Background**

KLH-conjugated synthetic peptide encompassing a sequence within the center region of human TRF3. The exact sequence is proprietary.