

Anti-HSPBAP1 Antibody
Rabbit polyclonal antibody to HSPBAP1
Catalog # AP61022

Specification

Anti-HSPBAP1 Antibody - Product Information

Application	WB
Primary Accession	Q96EW2
Other Accession	Q8BK58
Reactivity	Human, Mouse, Rat
Host	Rabbit
Clonality	Polyclonal
Calculated MW	55167

Anti-HSPBAP1 Antibody - Additional Information

Gene ID 79663

Other Names

PASS1; HSPB1-associated protein 1; 27 kDa heat shock protein-associated protein 1; Protein associated with small stress protein 1

Target/Specificity

KLH-conjugated synthetic peptide encompassing a sequence within the center region of human HSPBAP1. The exact sequence is proprietary.

Dilution

WB~~WB (1/500 - 1/1000)

Format

Liquid in 0.42% Potassium phosphate, 0.87% Sodium chloride, pH 7.3, 30% glycerol, and 0.09% (W/V) sodium azide.

Storage

Store at -20 °C.Stable for 12 months from date of receipt

Anti-HSPBAP1 Antibody - Protein Information

Name HSPBAP1

Synonyms PASS1

Function

May play a role in cellular stress response.

Cellular Location

Cytoplasm.

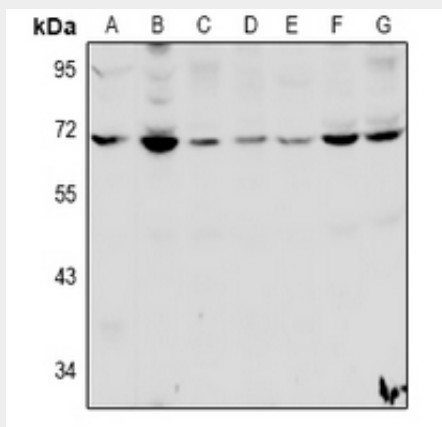
Tissue Location

Widely expressed..

Anti-HSPBAP1 Antibody - Protocols

Provided below are standard protocols that you may find useful for product applications.

- [Western Blot](#)
- [Blocking Peptides](#)
- [Dot Blot](#)
- [Immunohistochemistry](#)
- [Immunofluorescence](#)
- [Immunoprecipitation](#)
- [Flow Cytometry](#)
- [Cell Culture](#)

Anti-HSPBAP1 Antibody - Images

Western blot analysis of HSPBAP1 expression in CT26 (A), SGC7901 (B), HCT116 (C), C6 (D), PC12 (E), MCF7 (F), A549 (G) whole cell lysates.

Anti-HSPBAP1 Antibody - Background

KLH-conjugated synthetic peptide encompassing a sequence within the center region of human HSPBAP1. The exact sequence is proprietary.