

**Anti-ZAR1 Antibody**  
**Rabbit polyclonal antibody to ZAR1**  
**Catalog # AP61023****Specification**

---

**Anti-ZAR1 Antibody - Product Information**

Application	WB
Primary Accession	<a href="#">Q86SH2</a>
Other Accession	<a href="#">Q80SU3</a>
Reactivity	Human, Mouse, Rat
Host	Rabbit
Clonality	Polyclonal
Calculated MW	45873

**Anti-ZAR1 Antibody - Additional Information****Gene ID** 326340**Other Names**

Zygote arrest protein 1; Oocyte-specific maternal effect factor

**Target/Specificity**

Recognizes endogenous levels of ZAR1 protein.

**Dilution**

WB~~WB (1/500 - 1/1000)

**Format**

Liquid in 0.42% Potassium phosphate, 0.87% Sodium chloride, pH 7.3, 30% glycerol, and 0.09% (W/V) sodium azide.

**Storage**

Store at -20 °C. Stable for 12 months from date of receipt

**Anti-ZAR1 Antibody - Protein Information****Name** ZAR1 {ECO:0000303|PubMed:12539046, ECO:0000312|HGNC:HGNC:20436}**Function**

mRNA-binding protein that mediates formation of MARDO (mitochondria-associated ribonucleoprotein domain), a membraneless compartment that stores maternal mRNAs in oocytes. MARDO assembly around mitochondria is directed by an increase in mitochondrial membrane potential during oocyte growth. Promotes formation of MARDO phase-separated membraneless compartment by undergoing liquid-liquid phase separation upon binding to maternal mRNAs. Binds to the 3'-UTR of maternal mRNAs. Maternal mRNAs stored in the MARDO are translationally repressed. Essential for female fertility and oocyte-to-embryo transition by coordinating maternal mRNA storage, translation and degradation.

**Cellular Location**

Cytoplasm, Cytoplasmic ribonucleoprotein granule {ECO:0000250|UniProtKB:Q80SU3}. Cytoplasm {ECO:0000250|UniProtKB:Q80SU3}. Note=Specifically localizes to MARDO (mitochondria-associated ribonucleoprotein domain), a mitochondria- associated membraneless compartment that stores mRNAs in oocytes {ECO:0000250|UniProtKB:Q80SU3}

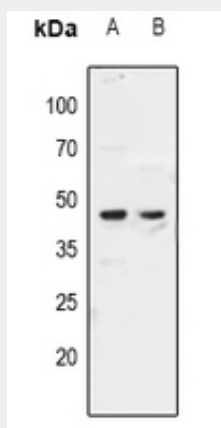
**Tissue Location**

Ovary and testis..

**Anti-ZAR1 Antibody - Protocols**

Provided below are standard protocols that you may find useful for product applications.

- [Western Blot](#)
- [Blocking Peptides](#)
- [Dot Blot](#)
- [Immunohistochemistry](#)
- [Immunofluorescence](#)
- [Immunoprecipitation](#)
- [Flow Cytometry](#)
- [Cell Culture](#)

**Anti-ZAR1 Antibody - Images**

Western blot analysis of ZAR1 expression in mouse testis (A), rat testis (B) whole cell lysates.

**Anti-ZAR1 Antibody - Background**

KLH-conjugated synthetic peptide encompassing a sequence within the center region of human ZAR1. The exact sequence is proprietary.