

Anti-CDC14A Antibody
Rabbit polyclonal antibody to CDC14A
Catalog # AP61024**Specification**

Anti-CDC14A Antibody - Product Information

Application	WB
Primary Accession	O9UNH5
Other Accession	O6GQT0
Reactivity	Human, Mouse, Rat
Host	Rabbit
Clonality	Polyclonal
Calculated MW	66574

Anti-CDC14A Antibody - Additional Information**Gene ID** 8556**Other Names**

Dual specificity protein phosphatase CDC14A; CDC14 cell division cycle 14 homolog A

Target/Specificity

KLH-conjugated synthetic peptide encompassing a sequence within the center region of human CDC14A. The exact sequence is proprietary.

Dilution

WB~~WB (1/500 - 1/1000)

Format

Liquid in 0.42% Potassium phosphate, 0.87% Sodium chloride, pH 7.3, 30% glycerol, and 0.09% (W/V) sodium azide.

Storage

Store at -20 °C. Stable for 12 months from date of receipt

Anti-CDC14A Antibody - Protein Information**Name** CDC14A**Function**

Dual-specificity phosphatase. Required for centrosome separation and productive cytokinesis during cell division. Dephosphorylates SIRT2 around early anaphase. May dephosphorylate the APC subunit FZR1/CDH1, thereby promoting APC-FZR1 dependent degradation of mitotic cyclins and subsequent exit from mitosis. Required for normal hearing (PubMed:29293958).

Cellular Location

Nucleus. Cytoplasm, cytoskeleton, microtubule organizing center, centrosome. Cytoplasm,

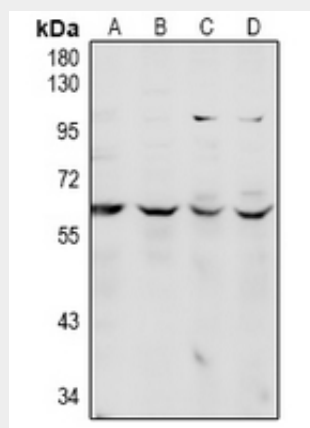
cytoskeleton, spindle pole. Cytoplasm, cytoskeleton, spindle. Cell projection, kinocilium {ECO:0000250|UniProtKB:Q6GQT0}. Cell projection, stereocilium {ECO:0000250|UniProtKB:Q6GQT0}. Note=Centrosomal during interphase, released into the cytoplasm at the onset of mitosis. Subsequently localizes to the mitotic spindle pole and at the central spindle (PubMed:11901424, PubMed:12134069, PubMed:15263015). Present along both the transient kinocilia of developing cochlear hair cells and the persistent kinocilia of vestibular hair cells (By similarity) {ECO:0000250|UniProtKB:Q6GQT0, ECO:0000269|PubMed:11901424, ECO:0000269|PubMed:12134069, ECO:0000269|PubMed:15263015}

Anti-CDC14A Antibody - Protocols

Provided below are standard protocols that you may find useful for product applications.

- [Western Blot](#)
- [Blocking Peptides](#)
- [Dot Blot](#)
- [Immunohistochemistry](#)
- [Immunofluorescence](#)
- [Immunoprecipitation](#)
- [Flow Cytometry](#)
- [Cell Culture](#)

Anti-CDC14A Antibody - Images



Western blot analysis of CDC14A expression in C6 (A), MEF (B), K562 (C), HEK293T (D) whole cell lysates.

Anti-CDC14A Antibody - Background

KLH-conjugated synthetic peptide encompassing a sequence within the center region of human CDC14A. The exact sequence is proprietary.